

JAK1 Rabbit mAb

Catalog No.: A11963

Recombinant

8 Publications

Basic Information

Observed MW

130kDa

Calculated MW

133kDa

Category

Primary antibody

Applications

WB,IHC-P,ELISA

Cross-Reactivity

Human, Mouse, Rat

CloneNo number

ARC0434

Background

This gene encodes a membrane protein that is a member of a class of protein-tyrosine kinases (PTK) characterized by the presence of a second phosphotransferase-related domain immediately N-terminal to the PTK domain. The encoded kinase phosphorylates STAT proteins (signal transducers and activators of transcription) and plays a key role in interferon-alpha/beta, interferon-gamma, and cytokine signal transduction. This gene plays a crucial role in effecting the expression of genes that mediate inflammation, epithelial remodeling, and metastatic cancer progression. This gene is a key component of the interleukin-6 (IL-6)/JAK1/STAT3 immune and inflammation response and is a therapeutic target for alleviating cytokine storms. The kinase activity of this gene is directly inhibited by the suppressor of cytokine signalling 1 (SOCS1) protein. Alternative splicing results in multiple transcript variants.

Recommended Dilutions

WB 1:1000 - 1:2000

IHC-P 1:200 - 1:2000

ELISA Recommended starting concentration is 1 µg/mL. Please optimize the concentration based on your specific assay requirements.

Immunogen Information

Gene ID

3716

Swiss Prot

P23458

Immunogen

A synthetic peptide corresponding to a sequence within amino acids 600-700 of human JAK1 (P23458).

Synonyms

JTK3; AIIDE; JAK1A; JAK1B; JAK1

Contact

 | 400-999-6126 | cn.market@abclonal.com.cn | www.abclonal.com.cn

Product Information

Source

Rabbit

Isotype

IgG

Purification

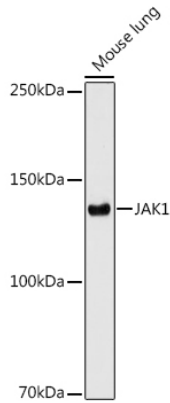
Affinity purification

Storage

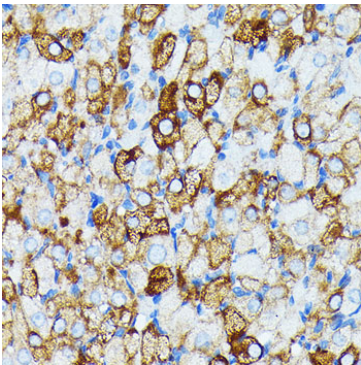
Store at -20°C. Avoid freeze / thaw cycles.

Buffer: PBS with 0.02% sodium azide,0.05% BSA,50% glycerol,pH7.3.

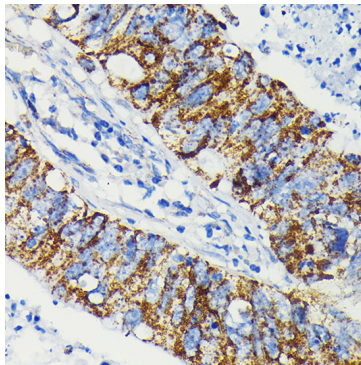
Validation Data



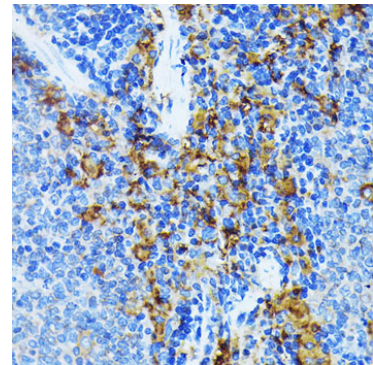
Western blot analysis of lysates from Mouse lung using JAK1 Rabbit mAb (A11963) at 1:1000 dilution incubated overnight at 4°C.
Secondary antibody: HRP-conjugated Goat anti-Rabbit IgG (H+L) (AS014) at 1:10000 dilution.
Lysates/proteins: 25µg per lane.
Blocking buffer: 3% nonfat dry milk in TBST.
Detection: ECL Enhanced Kit (RM00021).
Exposure time: 180s.



Immunohistochemistry analysis of paraffin-embedded Rat ovary tissue using JAK1 Rabbit mAb (A11963) at a dilution of 1:100 (40x lens). Microwave antigen retrieval performed with 0.01M PBS Buffer (pH 7.2) prior to IHC staining.



Immunohistochemistry analysis of paraffin-embedded Human colon carcinoma tissue using JAK1 Rabbit mAb (A11963) at a dilution of 1:100 (40x lens). Microwave antigen retrieval performed with 0.01M PBS Buffer (pH 7.2) prior to IHC staining.



Immunohistochemistry analysis of paraffin-embedded Mouse spleen tissue using JAK1 Rabbit mAb (A11963) at a dilution of 1:100 (40x lens). Microwave antigen retrieval performed with 0.01M PBS Buffer (pH 7.2) prior to IHC staining.