

TIMP3 Rabbit pAb

Catalog No.: A11986 **2 Publications**

Basic Information

Observed MW

20kDa/25kDa

Calculated MW

24kDa

Category

Primary antibody

Applications

ELISA, WB

Cross-Reactivity

Human, Mouse, Rat

Background

This gene belongs to the TIMP gene family. The proteins encoded by this gene family are inhibitors of the matrix metalloproteinases, a group of peptidases involved in degradation of the extracellular matrix (ECM). Expression of this gene is induced in response to mitogenic stimulation and this netrin domain-containing protein is localized to the ECM. Mutations in this gene have been associated with the autosomal dominant disorder Sorsby's fundus dystrophy.

Recommended Dilutions

WB 1:500 - 1:1000

Immunogen Information

Gene ID

7078

Swiss Prot

P35625

Immunogen

A synthetic peptide corresponding to a sequence within amino acids 110-210 of human TIMP3 (NP_000353.1).

Synonyms

SFD; K222; K222TA2; HSMRK222; TIMP3

Contact

☎ | 400-999-6126

✉ | cn.market@abclonal.com.cn

🌐 | www.abclonal.com.cn

Product Information

Source

Rabbit

Isotype

IgG

Purification

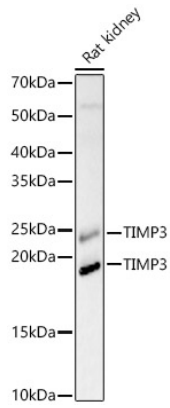
Affinity purification

Storage

Store at -20°C. Avoid freeze / thaw cycles.

Buffer: PBS with 0.01% thimerosal, 50% glycerol, pH7.3.

Validation Data



Western blot analysis of Rat kidney, using TIMP3 antibody (A11986) at 1:400 dilution.
Secondary antibody: HRP Goat Anti-Rabbit IgG (H+L) (AS014) at 1:10000 dilution.
Lysates/proteins: 25µg per lane.
Blocking buffer: 3% nonfat dry milk in TBST.
Detection: ECL Basic Kit (RM00020).
Exposure time: 60s.