

# Cytokeratin 7 (KRT7) Rabbit pAb

Catalog No.: A12004 **2 Publications**

## Basic Information

**Observed MW**

51kDa

**Calculated MW**

51kDa

**Category**

Primary antibody

**Applications**

ELISA, WB, IHC-P, IF/ICC

**Cross-Reactivity**

Human, Mouse, Rat

## Background

The protein encoded by this gene is a member of the keratin gene family. The type II cytokeratins consist of basic or neutral proteins which are arranged in pairs of heterotypic keratin chains coexpressed during differentiation of simple and stratified epithelial tissues. This type II cytokeratin is specifically expressed in the simple epithelia lining the cavities of the internal organs and in the gland ducts and blood vessels. The genes encoding the type II cytokeratins are clustered in a region of chromosome 12q12-q13. Alternative splicing may result in several transcript variants; however, not all variants have been fully described.

## Recommended Dilutions

<b>WB</b>	1:500 - 1:1000
<b>IHC-P</b>	1:50 - 1:200
<b>IF/ICC</b>	1:50 - 1:200

## Immunogen Information

**Gene ID**

3855

**Swiss Prot**

P08729

**Immunogen**

Recombinant fusion protein containing a sequence corresponding to amino acids 1-94 of human Cytokeratin 7 (KRT7) (NP\_005547.3).

**Synonyms**

K7; CK7; SCL; K2C7; Cytokeratin 7 (KRT7)

## Contact

 | 400-999-6126 | [cn.market@abclonal.com.cn](mailto:cn.market@abclonal.com.cn) | [www.abclonal.com.cn](http://www.abclonal.com.cn)

## Product Information

**Source**

Rabbit

**Isotype**

IgG

**Purification**

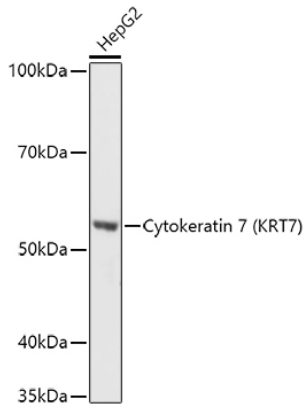
Affinity purification

**Storage**

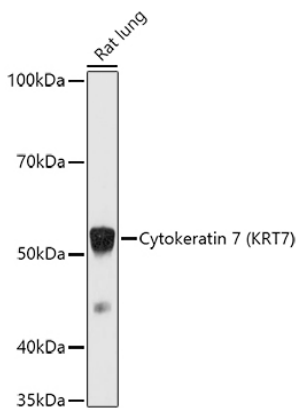
Store at -20°C. Avoid freeze / thaw cycles.

Buffer: PBS with 0.01% thimerosal, 50% glycerol, pH7.3.

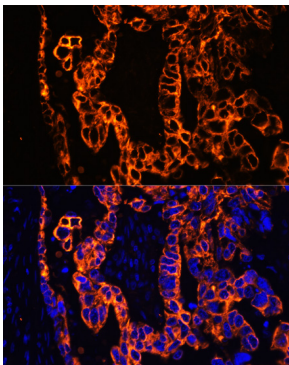
## Validation Data



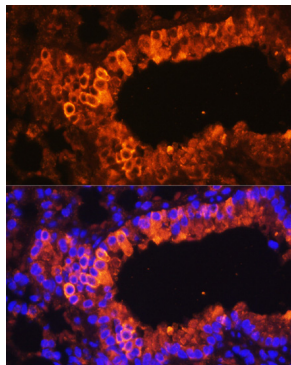
Western blot analysis of lysates from HepG2 cells, using Cytokeratin 7 (KRT7) Rabbit pAb (A12004) at 1:1000 dilution.  
Secondary antibody: HRP Goat Anti-Rabbit IgG (H+L) (AS014) at 1:10000 dilution.  
Lysates/proteins: 25µg per lane.  
Blocking buffer: 3% nonfat dry milk in TBST.  
Detection: ECL Basic Kit (RM00020).  
Exposure time: 3s.



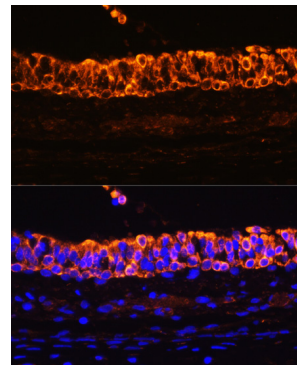
Western blot analysis of lysates from Rat lung, using Cytokeratin 7 (KRT7) Rabbit pAb (A12004) at 1:1000 dilution.  
Secondary antibody: HRP Goat Anti-Rabbit IgG (H+L) (AS014) at 1:10000 dilution.  
Lysates/proteins: 25µg per lane.  
Blocking buffer: 3% nonfat dry milk in TBST.  
Detection: ECL Basic Kit (RM00020).  
Exposure time: 90s.



Immunofluorescence analysis of human lung cancer using Cytokeratin 7 (KRT7) Rabbit pAb (A12004) at dilution of 1:100. Blue: DAPI for nuclear staining.



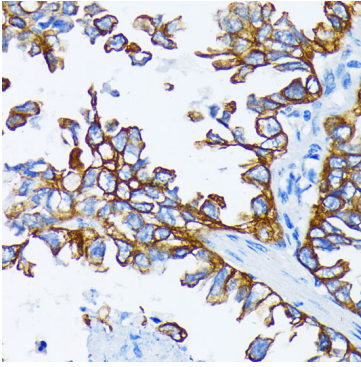
Immunofluorescence analysis of mouse bronchus using Cytokeratin 7 (KRT7) Rabbit pAb (A12004) at dilution of 1:100. Blue: DAPI for nuclear staining.



Immunofluorescence analysis of rat bronchus using Cytokeratin 7 (KRT7) Rabbit pAb (A12004) at dilution of 1:100. Blue: DAPI for nuclear staining.

## Validation Data

---



Immunohistochemistry analysis of paraffin-embedded human lung cancer using Cytokeratin 7 (KRT7) Rabbit pAb (A12004) at dilution of 1:200 (40x lens). Perform microwave antigen retrieval with 10 mM PBS buffer pH 7.2 before commencing with IHC staining protocol.