

MMP3 Rabbit pAb

Catalog No.: A1202 **17 Publications**

Basic Information

Observed MW

60kDa/47kDa

Calculated MW

54kDa

Category

Primary antibody

Applications

ELISA, WB, IHC-P, IF/ICC

Cross-Reactivity

Human, Mouse, Rat

Background

Proteins of the matrix metalloproteinase (MMP) family are involved in the breakdown of extracellular matrix in normal physiological processes, such as embryonic development, reproduction, and tissue remodeling, as well as in disease processes, such as arthritis and metastasis. Most MMP's are secreted as inactive proproteins which are activated when cleaved by extracellular proteinases. This gene encodes an enzyme which degrades fibronectin, laminin, collagens III, IV, IX, and X, and cartilage proteoglycans. The enzyme is thought to be involved in wound repair, progression of atherosclerosis, and tumor initiation. The gene is part of a cluster of MMP genes which localize to chromosome 11q22.3.

Recommended Dilutions

WB	1:500 - 1:1000
IHC-P	1:50 - 1:200
IF/ICC	1:50 - 1:100

Immunogen Information

Gene ID

4314

Swiss Prot

P08254

Immunogen

Recombinant fusion protein containing a sequence corresponding to amino acids 385-477 of human MMP3 (NP_002413.1).

Synonyms

SL-1; STMY; STR1; CHDS6; MMP-3; STMY1; MMP3

Contact

 | 400-999-6126 | cn.market@abclonal.com.cn | www.abclonal.com.cn

Product Information

Source

Rabbit

Isotype

IgG

Purification

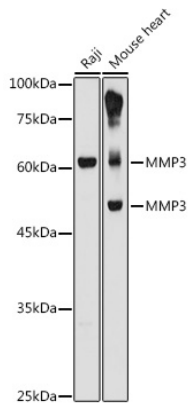
Affinity purification

Storage

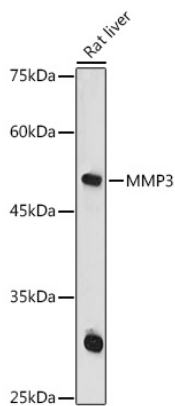
Store at -20°C. Avoid freeze / thaw cycles.

Buffer: PBS with 0.05% proclin300, 50% glycerol, pH7.3.

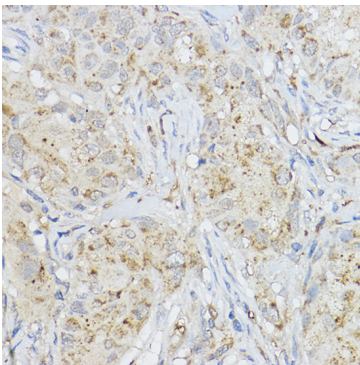
Validation Data



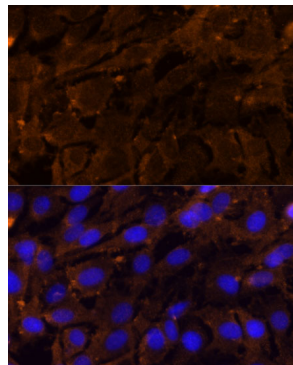
Western blot analysis of various lysates using MMP3 Rabbit pAb (A1202) at 1:1000 dilution.
Secondary antibody: HRP Goat Anti-Rabbit IgG (H+L) (AS014) at 1:10000 dilution.
Lysates/proteins: 25µg per lane.
Blocking buffer: 3% nonfat dry milk in TBST.
Detection: ECL Basic Kit (RM00020).
Exposure time: 10s.



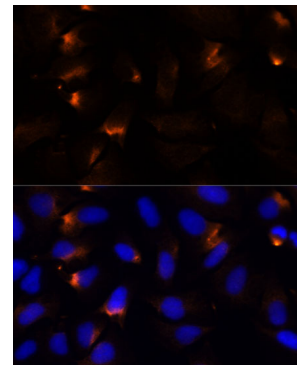
Western blot analysis of lysates from Rat liver, using MMP3 Rabbit pAb (A1202) at 1:1000 dilution.
Secondary antibody: HRP Goat Anti-Rabbit IgG (H+L) (AS014) at 1:10000 dilution.
Lysates/proteins: 25µg per lane.
Blocking buffer: 3% nonfat dry milk in TBST.
Detection: ECL Enhanced Kit (RM00021).
Exposure time: 180s.



Immunohistochemistry analysis of paraffin-embedded human breast cancer using MMP3 Rabbit pAb (A1202) at dilution of 1:200 (40x lens). Perform high pressure antigen retrieval with 10 mM citrate buffer pH 6.0 before commencing with IHC staining protocol.



Immunofluorescence analysis of C6 cells using MMP3 Rabbit pAb (A1202) at dilution of 1:100 (40x lens). Secondary antibody: Cy3 Goat Anti-Rabbit IgG (H+L) (AS007) at 1:500 dilution. Blue: DAPI for nuclear staining.



Immunofluorescence analysis of U-2 OS cells using MMP3 Rabbit pAb (A1202) at dilution of 1:100 (40x lens). Secondary antibody: Cy3 Goat Anti-Rabbit IgG (H+L) (AS007) at 1:500 dilution. Blue: DAPI for nuclear staining.