

GLG1 Rabbit pAb

Catalog No.: A12024

Basic Information

Observed MW

135kDa

Calculated MW

135kDa

Category

Primary antibody

Applications

ELISA, WB

Cross-Reactivity

Human, Mouse

Background

Predicted to enable fibroblast growth factor binding activity. Predicted to act upstream of or within several processes, including negative regulation of protein processing; negative regulation of transforming growth factor beta receptor signaling pathway; and regulation of chondrocyte differentiation. Located in Golgi apparatus.

Recommended Dilutions

WB 1:500 - 1:1000

Immunogen Information

Gene ID

2734

Swiss Prot

Q92896

Immunogen

Recombinant fusion protein containing a sequence corresponding to amino acids 974-1203 of human GLG1 (NP_036333.2).

Synonyms

CFR-1; ESL-1; MG160; MG-160; GLG1

Contact

☎ | 400-999-6126

✉ | cn.market@abclonal.com.cn

🌐 | www.abclonal.com.cn

Product Information

Source

Rabbit

Isotype

IgG

Purification

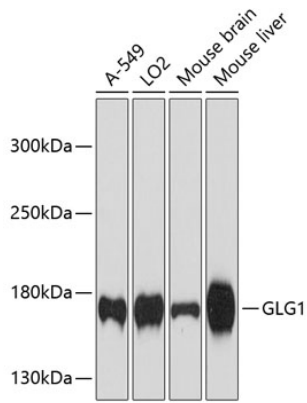
Affinity purification

Storage

Store at -20°C. Avoid freeze / thaw cycles.

Buffer: PBS with 0.01% thimerosal, 50% glycerol, pH7.3.

Validation Data



Western blot analysis of various lysates using GLG1 Rabbit pAb (A12024) at 1:3000 dilution.
Secondary antibody: HRP Goat Anti-Rabbit IgG (H+L) (AS014) at 1:10000 dilution.
Lysates/proteins: 25µg per lane.
Blocking buffer: 3% nonfat dry milk in TBST.
Detection: ECL Enhanced Kit (RM00021).
Exposure time: 90s.