

LCN6 Rabbit pAb

Catalog No.: A1204

Basic Information

Observed MW

18kDa

Calculated MW

18kDa

Category

Primary antibody

Applications

ELISA, WB

Cross-Reactivity

Mouse, Rat

Background

Predicted to enable small molecule binding activity. Predicted to be involved in single fertilization. Predicted to be located in extracellular region.

Recommended Dilutions

WB 1:500 - 1:2000

Immunogen Information

Gene ID

158062

Swiss Prot

P62502

Immunogen

Recombinant fusion protein containing a sequence corresponding to amino acids 25-120 of human LCN6 (NP_945184.1).

Synonyms

LCN5; hLcn5; UNQ643; LCN6

Contact

☎ | 400-999-6126

✉ | cn.market@abclonal.com.cn

🌐 | www.abclonal.com.cn

Product Information

Source

Rabbit

Isotype

IgG

Purification

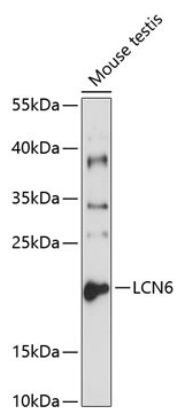
Affinity purification

Storage

Store at -20°C. Avoid freeze / thaw cycles.

Buffer: PBS with 0.01% thimerosal, 50% glycerol, pH7.3.

Validation Data



Western blot analysis of lysates from mouse testis, using LCN6 Rabbit pAb (A1204) at 1:1000 dilution.
Secondary antibody: HRP Goat Anti-Rabbit IgG (H+L) (AS014) at 1:10000 dilution.
Lysates/proteins: 25µg per lane.
Blocking buffer: 3% nonfat dry milk in TBST.
Detection: ECL Basic Kit (RM00020).
Exposure time: 5s.