

ANO6 Rabbit pAb

Catalog No.: A12050

Basic Information

Observed MW

110kDa

Calculated MW

106kDa

Category

Primary antibody

Applications

WB,ELISA

Cross-Reactivity

Human, Mouse, Rat

Background

This gene encodes a multi-pass transmembrane protein that belongs to the anoctamin family. This protein is an essential component for the calcium-dependent exposure of phosphatidylserine on the cell surface. The scrambling of phospholipid occurs in various biological systems, such as when blood platelets are activated, they expose phosphatidylserine to trigger the clotting system. Mutations in this gene are associated with Scott syndrome. Alternatively spliced transcript variants encoding different isoforms have been found for this gene.

Recommended Dilutions

WB 1:500 - 1:3000

ELISA Recommended starting concentration is 1 µg/mL. Please optimize the concentration based on your specific assay requirements.

Immunogen Information

Gene ID

196527

Swiss Prot

Q4KMQ2

Immunogen

Recombinant protein (or fragment). This information is considered to be commercially sensitive.

Synonyms

SCTS; BDPLT7; TMEM16F; ANO6

Contact

☎ | 400-999-6126

✉ | cn.market@abclonal.com.cn

🌐 | www.abclonal.com.cn

Product Information

Source

Rabbit

Isotype

IgG

Purification

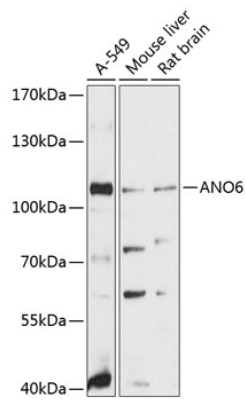
Affinity purification

Storage

Store at -20°C. Avoid freeze / thaw cycles.

Buffer: PBS with 0.01% thimerosal, 50% glycerol, pH7.3.

Validation Data



Western blot analysis of various lysates using ANO6 Rabbit pAb (A12050) at 1:3000 dilution.
Secondary antibody: HRP-conjugated Goat anti-Rabbit IgG (H+L) (AS014) at 1:10000 dilution.
Lysates/proteins: 25µg per lane.
Blocking buffer: 3% nonfat dry milk in TBST.
Detection: ECL Basic Kit (RM00020).
Exposure time: 90s.