

FOXP3 Rabbit pAb

Catalog No.: A12051 **3 Publications**

Basic Information

Observed MW

45kDa

Calculated MW

47kDa

Category

Primary antibody

Applications

WB,ELISA

Cross-Reactivity

Rat

Background

The protein encoded by this gene is a member of the forkhead/winged-helix family of transcriptional regulators. Defects in this gene are the cause of immunodeficiency polyendocrinopathy, enteropathy, X-linked syndrome (IPEX), also known as X-linked autoimmunity-immunodeficiency syndrome. Alternatively spliced transcript variants encoding different isoforms have been identified.

Recommended Dilutions

WB 1:500 - 1:1000

ELISA Recommended starting concentration is 1 µg/mL. Please optimize the concentration based on your specific assay requirements.

Immunogen Information

Gene ID

50943

Swiss Prot

Q9BZS1

Immunogen

Recombinant fusion protein containing a sequence corresponding to amino acids 70-180 of human FOXP3 (NP_054728.2).

Synonyms

JM2; AIID; IPEX; PIDX; XPID; DIETER; FOXP3

Contact

 | 400-999-6126

 | cn.market@abclonal.com.cn

 | www.abclonal.com.cn

Product Information

Source

Rabbit

Isotype

IgG

Purification

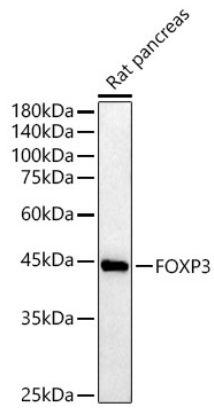
Affinity purification

Storage

Store at -20°C. Avoid freeze / thaw cycles.

Buffer: PBS with 0.05% proclin300,50% glycerol,pH7.3.

Validation Data



Western blot analysis of lysates from Rat pancreas, using FOXP3 Rabbit pAb (A12051) at 1:800 dilution.
Secondary antibody: HRP-conjugated Goat anti-Rabbit IgG (H+L) (AS014) at 1:10000 dilution.
Lysates/proteins: 25µg per lane.
Blocking buffer: 3% nonfat dry milk in TBST.
Detection: ECL Basic Kit (RM00020).
Exposure time: 30s.