

POLK Rabbit pAb

Catalog No.: A12052

Basic Information

Observed MW

71kDa

Calculated MW

99kDa

Category

Primary antibody

Applications

WB, ELISA

Cross-Reactivity

Human, Mouse, Rat

Background

This gene encodes a member of the DNA polymerase type-Y family of proteins. The encoded protein is a specialized DNA polymerase that catalyzes translesion DNA synthesis, which allows DNA replication in the presence of DNA lesions. Human cell lines lacking a functional copy of this gene exhibit impaired genome integrity and enhanced susceptibility to oxidative damage. Mutations in this gene that impair enzyme activity may be associated with prostate cancer in human patients.

Recommended Dilutions

WB 1:500 - 1:2000

ELISA Recommended starting concentration is 1 µg/mL. Please optimize the concentration based on your specific assay requirements.

Immunogen Information

Gene ID

51426

Swiss Prot

Q9UBT6

Immunogen

Synthetic peptide. This information is considered to be commercially sensitive.

Synonyms

DINP; POLQ; DINB1; POLK

Contact

☎ | 400-999-6126

✉ | cn.market@abclonal.com.cn

🌐 | www.abclonal.com.cn

Product Information

Source

Rabbit

Isotype

IgG

Purification

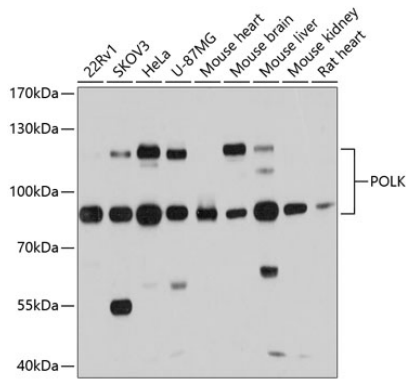
Affinity purification

Storage

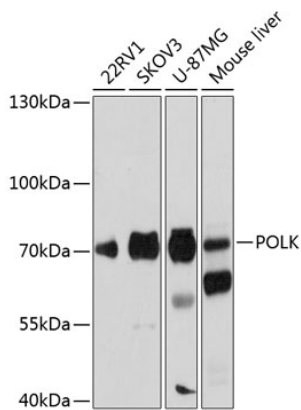
Store at -20°C. Avoid freeze / thaw cycles.

Buffer: PBS with 0.01% thimerosal, 50% glycerol, pH7.3.

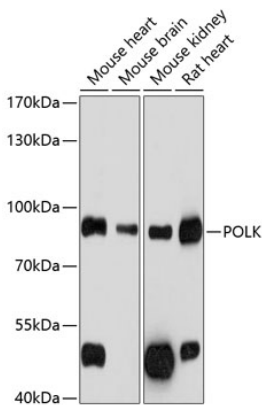
Validation Data



Western blot analysis of various lysates using POLK Rabbit pAb (A12052) at 1:1000 dilution. Secondary antibody: HRP-conjugated Goat anti-Rabbit IgG (H+L) (AS014) at 1:10000 dilution. Lysates/proteins: 25µg per lane. Blocking buffer: 3% nonfat dry milk in TBST. Detection: ECL Basic Kit (RM00020). Exposure time: 5s.



Western blot analysis of various lysates using POLK Rabbit pAb (A12052) at 1:1000 dilution. Secondary antibody: HRP-conjugated Goat anti-Rabbit IgG (H+L) (AS014) at 1:10000 dilution. Lysates/proteins: 25µg per lane. Blocking buffer: 3% nonfat dry milk in TBST. Detection: ECL Basic Kit (RM00020). Exposure time: 5s.



Western blot analysis of various lysates using POLK Rabbit pAb (A12052) at 1:1000 dilution. Secondary antibody: HRP-conjugated Goat anti-Rabbit IgG (H+L) (AS014) at 1:10000 dilution. Lysates/proteins: 25µg per lane. Blocking buffer: 3% nonfat dry milk in TBST. Detection: ECL Basic Kit (RM00020). Exposure time: 5s.