

CPQ Rabbit pAb

Catalog No.: A12062

Basic Information

Observed MW

57-60kDa

Calculated MW

52kDa

Category

Primary antibody

Applications

ELISA, WB

Cross-Reactivity

Human, Mouse, Rat

Background

This gene encodes a metallopeptidase that belongs to the peptidase M28 family. The encoded protein may catalyze the cleavage of dipeptides with unsubstituted terminals into amino acids.

Recommended Dilutions

WB 1:500 - 1:2000

Immunogen Information

Gene ID

10404

Swiss Prot

Q9Y646

Immunogen

A synthetic peptide corresponding to a sequence within amino acids 1-100 of human CPQ (NP_057218.1).

Synonyms

LDP; PGCP; CPQ

Contact

 | 400-999-6126

 | cn.market@abclonal.com.cn

 | www.abclonal.com.cn

Product Information

Source

Rabbit

Isotype

IgG

Purification

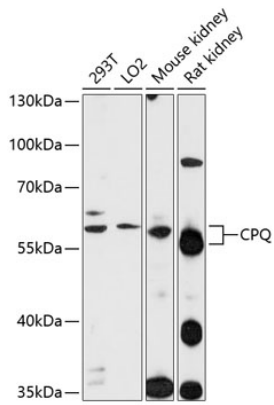
Affinity purification

Storage

Store at -20°C. Avoid freeze / thaw cycles.

Buffer: PBS with 0.01% thimerosal, 50% glycerol, pH7.3.

Validation Data



Western blot analysis of various lysates using CPQ Rabbit pAb (A12062) at 1:1000 dilution.
Secondary antibody: HRP Goat Anti-Rabbit IgG (H+L) (AS014) at 1:10000 dilution.
Lysates/proteins: 25µg per lane.
Blocking buffer: 3% nonfat dry milk in TBST.
Detection: ECL Enhanced Kit (RM00021).
Exposure time: 90s.