

# Myeloperoxidase (MPO) Rabbit mAb

Catalog No.: A12109 **Recombinant** **1 Publications**

## Basic Information

### Observed MW

13kDa

### Calculated MW

84kDa

### Category

Primary antibody

### Applications

WB,IHC-P,ELISA

### Cross-Reactivity

Human

### CloneNo number

ARC53227

## Background

Myeloperoxidase (MPO) is a heme protein synthesized during myeloid differentiation that constitutes the major component of neutrophil azurophilic granules. Produced as a single chain precursor, myeloperoxidase is subsequently cleaved into a light and heavy chain. The mature myeloperoxidase is a tetramer composed of 2 light chains and 2 heavy chains. This enzyme produces hypohalous acids central to the microbicidal activity of neutrophils.

## Recommended Dilutions

**WB** 1:500 - 1:1000

**IHC-P** 1:500 - 1:1000

**ELISA** Recommended starting concentration is 1 µg/mL. Please optimize the concentration based on your specific assay requirements.

## Immunogen Information

### Gene ID

4353

### Swiss Prot

P05164

### Immunogen

A synthetic peptide corresponding to a sequence within amino acids 646-745 of human Myeloperoxidase (MPO) (NP\_000241.1).

### Synonyms

## Contact

☎ | 400-999-6126

✉ | [cn.market@abclonal.com.cn](mailto:cn.market@abclonal.com.cn)

🌐 | [www.abclonal.com.cn](http://www.abclonal.com.cn)

## Product Information

### Source

Rabbit

### Isotype

IgG

### Purification

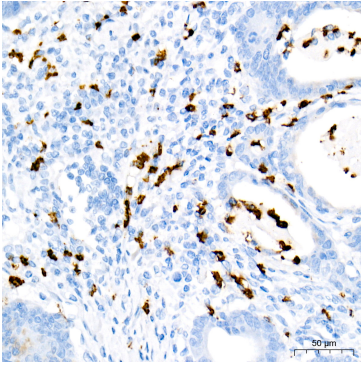
Affinity purification

### Storage

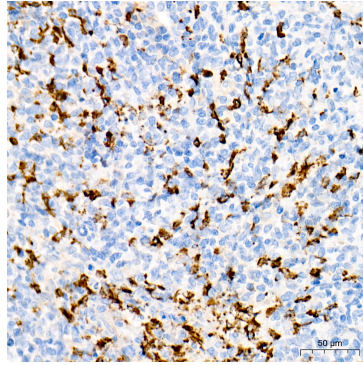
Store at -20°C. Avoid freeze / thaw cycles.

Buffer: PBS with 0.05% proclin300,0.05% BSA,50% glycerol,pH7.3.

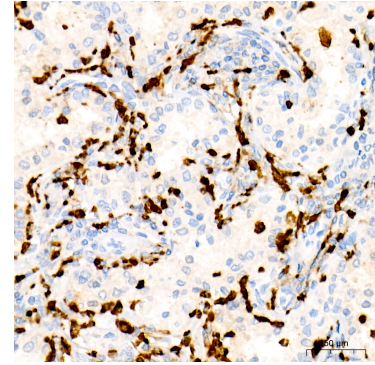
## Validation Data



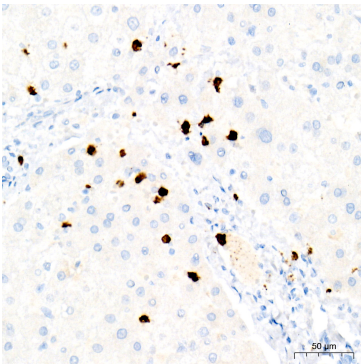
Immunohistochemistry analysis of paraffin-embedded Human colon carcinoma using Myeloperoxidase (MPO) Rabbit mAb (A12109) at dilution of 1:1000 (40x lens). High pressure antigen retrieval performed with 0.01M Tris/EDTA Buffer (pH 9.0) prior to IHC staining.



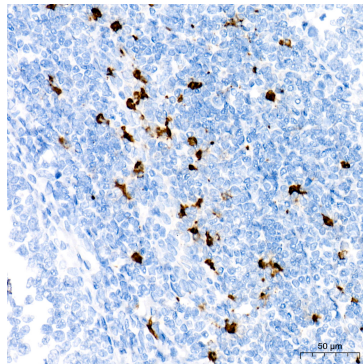
Immunohistochemistry analysis of paraffin-embedded Human extranodal NK-T cell lymphoma using Myeloperoxidase (MPO) Rabbit mAb (A12109) at dilution of 1:1000 (40x lens). High pressure antigen retrieval performed with 0.01M Tris/EDTA Buffer (pH 9.0) prior to IHC staining.



Immunohistochemistry analysis of paraffin-embedded Human hepatocholangiocarcinoma using Myeloperoxidase (MPO) Rabbit mAb (A12109) at dilution of 1:1000 (40x lens). High pressure antigen retrieval performed with 0.01M Tris/EDTA Buffer (pH 9.0) prior to IHC staining.



Immunohistochemistry analysis of paraffin-embedded Human liver using Myeloperoxidase (MPO) Rabbit mAb (A12109) at dilution of 1:1000 (40x lens). High pressure antigen retrieval performed with 0.01M Tris/EDTA Buffer (pH 9.0) prior to IHC staining.



Immunohistochemistry analysis of paraffin-embedded Human tonsil using Myeloperoxidase (MPO) Rabbit mAb (A12109) at dilution of 1:1000 (40x lens). High pressure antigen retrieval performed with 0.01M Tris/EDTA Buffer (pH 9.0) prior to IHC staining.