

DTL Rabbit pAb

Catalog No.: A12150

Basic Information

Observed MW

90kDa

Calculated MW

79kDa

Category

Primary antibody

Applications

ELISA, WB

Cross-Reactivity

Mouse, Rat

Background

Contributes to ubiquitin-protein transferase activity. Involved in several processes, including protein ubiquitination; regulation of G2/M transition of mitotic cell cycle; and translesion synthesis. Located in centrosome; cytosol; and nuclear lumen. Part of Cul4A-RING E3 ubiquitin ligase complex and Cul4B-RING E3 ubiquitin ligase complex.

Recommended Dilutions

WB 1:500 - 1:2000

Immunogen Information

Gene ID

51514

Swiss Prot

Q9NZJ0

Immunogen

Recombinant fusion protein containing a sequence corresponding to amino acids 541-730 of human DTL (NP_057532.3).

Synonyms

CDT2; RAMP; DCAF2; L2DTL; DTL

Contact

 | 400-999-6126

 | cn.market@abclonal.com.cn

 | www.abclonal.com.cn

Product Information

Source

Rabbit

Isotype

IgG

Purification

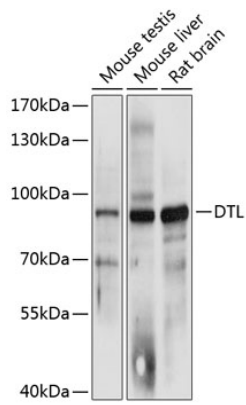
Affinity purification

Storage

Store at -20°C. Avoid freeze / thaw cycles.

Buffer: PBS with 0.01% thimerosal, 50% glycerol, pH7.3.

Validation Data



Western blot analysis of various lysates using DTL Rabbit pAb (A12150) at 1:3000 dilution.
Secondary antibody: HRP Goat Anti-Rabbit IgG (H+L) (AS014) at 1:10000 dilution.
Lysates/proteins: 25 μ g per lane.
Blocking buffer: 3% nonfat dry milk in TBST.
Detection: ECL Basic Kit (RM00020).
Exposure time: 1s.