

SRPX Rabbit pAb

Catalog No.: A1217 **1 Publications**

Basic Information

Observed MW

35kDa

Calculated MW

52kDa

Category

Primary antibody

Applications

ELISA, WB, IHC-P

Cross-Reactivity

Human, Mouse

Background

Predicted to be an extracellular matrix structural constituent. Predicted to be involved in cell adhesion. Predicted to act upstream of or within several processes, including negative regulation of cell proliferation involved in contact inhibition; phagolysosome assembly; and positive regulation of extrinsic apoptotic signaling pathway in absence of ligand. Part of collagen-containing extracellular matrix.

Recommended Dilutions

WB 1:500 - 1:2000

IHC-P 1:50 - 1:100

Immunogen Information

Gene ID

8406

Swiss Prot

P78539

Immunogen

Recombinant fusion protein containing a sequence corresponding to amino acids 40-320 of human SRPX (NP_006298.1).

Synonyms

DRS; ETX1; SRPX1; HEL-S-83p; SRPX

Contact

☎ | 400-999-6126

✉ | cn.market@abclonal.com.cn

🌐 | www.abclonal.com.cn

Product Information

Source

Rabbit

Isotype

IgG

Purification

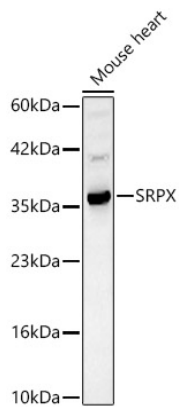
Affinity purification

Storage

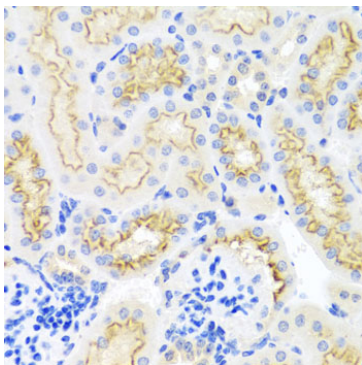
Store at -20°C. Avoid freeze / thaw cycles.

Buffer: PBS with 0.02% sodium azide, 50% glycerol, pH 7.3.

Validation Data



Western blot analysis of lysates from Mouse heart, using SRPX Rabbit pAb (A1217) at 1:1000 dilution.
Secondary antibody: HRP Goat Anti-Rabbit IgG (H+L) (AS014) at 1:10000 dilution.
Lysates/proteins: 25ug per lane.
Blocking buffer: 3% nonfat dry milk in TBST.
Detection: ECL Basic Kit (RM00020).
Exposure time: 30s.



Immunohistochemistry analysis of paraffin-embedded mouse kidney using SRPX Rabbit pAb (A1217) at dilution of 1:100 (40x lens). Perform microwave antigen retrieval with 10 mM PBS buffer pH 7.2 before commencing with IHC staining protocol.