

PPIH Rabbit pAb

Catalog No.: A12172

Basic Information

Observed MW

19kDa

Calculated MW

19kDa

Category

Primary antibody

Applications

ELISA, WB

Cross-Reactivity

Human, Mouse, Rat

Background

The protein encoded by this gene is a member of the peptidyl-prolyl cis-trans isomerase (PPIase) family. PPIases catalyze the cis-trans isomerization of proline imidic peptide bonds in oligopeptides and accelerate the folding of proteins. This protein is a specific component of the complex that includes pre-mRNA processing factors PRPF3, PRPF4, and PRPF18, as well as U4/U5/U6 tri-snRNP. This protein has been shown to possess PPIase activity and may act as a protein chaperone that mediates the interactions between different proteins inside the spliceosome.

Recommended Dilutions

WB 1:500 - 1:2000

Immunogen Information

Gene ID

10465

Swiss Prot

O43447

Immunogen

Recombinant fusion protein containing a sequence corresponding to amino acids 1-177 of human PPIH (NP_006338.1).

Synonyms

CYPH; CYP-20; USA-CYP; SnuCyp-20; PPIH

Contact

☎ | 400-999-6126

✉ | cn.market@abclonal.com.cn

🌐 | www.abclonal.com.cn

Product Information

Source

Rabbit

Isotype

IgG

Purification

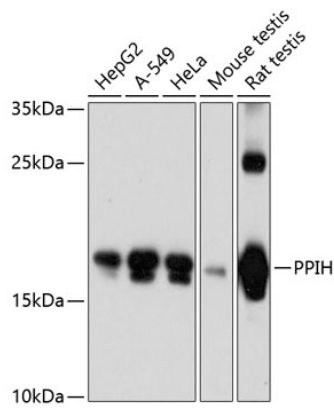
Affinity purification

Storage

Store at -20°C. Avoid freeze / thaw cycles.

Buffer: PBS with 0.01% thimerosal, 50% glycerol, pH7.3.

Validation Data



Western blot analysis of various lysates using PPIH Rabbit pAb (A12172) at 1:3000 dilution.
Secondary antibody: HRP Goat Anti-Rabbit IgG (H+L) (AS014) at 1:10000 dilution.
Lysates/proteins: 25µg per lane.
Blocking buffer: 3% nonfat dry milk in TBST.
Detection: ECL Basic Kit (RM00020).
Exposure time: 60s.