

# UBR4 Rabbit pAb

Catalog No.: A12193

## Basic Information

### Observed MW

600kDa

### Calculated MW

574kDa

### Category

Primary antibody

### Applications

ELISA, WB

### Cross-Reactivity

Human

## Background

The protein encoded by this gene is an E3 ubiquitin-protein ligase that interacts with the retinoblastoma-associated protein in the nucleus and with calcium-bound calmodulin in the cytoplasm. The encoded protein appears to be a cytoskeletal component in the cytoplasm and part of the chromatin scaffold in the nucleus. In addition, this protein is a target of the human papillomavirus type 16 E7 oncoprotein.

## Recommended Dilutions

WB 1:500 - 1:1000

## Immunogen Information

### Gene ID

23352

### Swiss Prot

Q5T4S7

### Immunogen

Recombinant fusion protein containing a sequence corresponding to amino acids 4884-5183 of human UBR4 (NP\_065816.2).

### Synonyms

p600; ZUBR1; RBAF600; UBR4

## Contact

☎ | 400-999-6126

✉ | [cn.market@abclonal.com.cn](mailto:cn.market@abclonal.com.cn)

🌐 | [www.abclonal.com.cn](http://www.abclonal.com.cn)

## Product Information

### Source

Rabbit

### Isotype

IgG

### Purification

Affinity purification

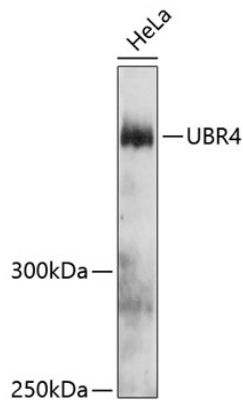
### Storage

Store at -20°C. Avoid freeze / thaw cycles.

Buffer: PBS with 0.02% sodium azide, 50% glycerol, pH7.3.

## Validation Data

---



Western blot analysis of extracts of HeLa cells, using UBR4 antibody (A12193) at 1:3000 dilution.  
Secondary antibody: HRP Goat Anti-Rabbit IgG (H+L) (AS014) at 1:10000 dilution.  
Lysates/proteins: 25µg per lane.  
Blocking buffer: 3% nonfat dry milk in TBST.  
Detection: ECL Enhanced Kit (RM00021).  
Exposure time: 90s.