

ESAM Rabbit pAb

Catalog No.: A12210

Basic Information

Observed MW

60kDa

Calculated MW

41kDa

Category

Primary antibody

Applications

WB, ELISA

Cross-Reactivity

Human

Background

Enables cell-cell adhesion mediator activity. Involved in several processes, including bicellular tight junction assembly; cell-cell adhesion; and regulation of actin cytoskeleton organization. Located in cell-cell junction and plasma membrane. Part of protein-containing complex.

Recommended Dilutions

WB 1:500 - 1:2000

ELISA Recommended starting concentration is 1 µg/mL. Please optimize the concentration based on your specific assay requirements.

Immunogen Information

Gene ID

90952

Swiss Prot

Q96AP7

Immunogen

Recombinant protein (or fragment). This information is considered to be commercially sensitive.

Synonyms

W117m; ESAM

Contact

 | 400-999-6126

 | cn.market@abclonal.com.cn

 | www.abclonal.com.cn

Product Information

Source

Rabbit

Isotype

IgG

Purification

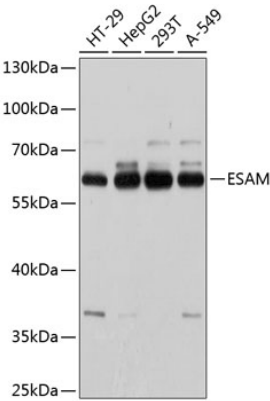
Affinity purification

Storage

Store at -20°C. Avoid freeze / thaw cycles.

Buffer: PBS with 0.01% thimerosal, 50% glycerol, pH 7.3.

Validation Data



Western blot analysis of various lysates using ESAM Rabbit pAb (A12210) at 1:1000 dilution.
Secondary antibody: HRP-conjugated Goat anti-Rabbit IgG (H+L) (AS014) at 1:10000 dilution.
Lysates/proteins: 25µg per lane.
Blocking buffer: 3% nonfat dry milk in TBST.
Detection: ECL Basic Kit (RM00020).
Exposure time: 5s.