

# Cdc25C Rabbit mAb

Catalog No.: A12234 **Recombinant** **1 Publications**

## Basic Information

### Observed MW

60-65kDa

### Calculated MW

53kDa

### Category

Primary antibody

### Applications

ELISA, WB, IF/ICC

### Cross-Reactivity

Human, Mouse, Rat

### CloneNo number

ARC0622

## Background

This gene encodes a conserved protein that plays a key role in the regulation of cell division. The encoded protein directs dephosphorylation of cyclin B-bound CDC2 and triggers entry into mitosis. It also suppresses p53-induced growth arrest. Multiple alternatively spliced transcript variants of this gene have been described.

## Recommended Dilutions

**WB** 1:500 - 1:1000

**IF/ICC** 1:50 - 1:200

## Immunogen Information

### Gene ID

995

### Swiss Prot

P30307

### Immunogen

A synthetic peptide corresponding to a sequence within amino acids 1-100 of human Cdc25C (P30307).

### Synonyms

CDC25; PPP1R60; Cdc25C

## Contact

☎ | 400-999-6126

✉ | [cn.market@abclonal.com.cn](mailto:cn.market@abclonal.com.cn)

🌐 | [www.abclonal.com.cn](http://www.abclonal.com.cn)

## Product Information

### Source

Rabbit

### Isotype

IgG

### Purification

Affinity purification

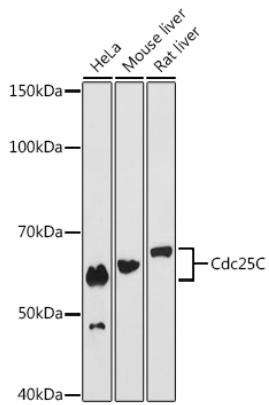
### Storage

Store at -20°C. Avoid freeze / thaw cycles.

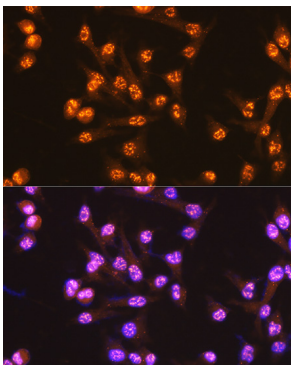
Buffer: PBS with 0.02% sodium azide, 0.05% BSA, 50% glycerol, pH7.3.

## Validation Data

---



Western blot analysis of various lysates using Cdc25C Rabbit mAb (A12234) at 1:1000 dilution.  
Secondary antibody: HRP Goat Anti-Rabbit IgG (H+L) (AS014) at 1:10000 dilution.  
Lysates/proteins: 25µg per lane.  
Blocking buffer: 3% nonfat dry milk in TBST.  
Detection: ECL Basic Kit (RM00020).  
Exposure time: 180s.



Immunofluorescence analysis of HeLa cells using Cdc25C Rabbit mAb (A12234) at dilution of 1:100 (40x lens). Secondary antibody: Cy3 Goat Anti-Rabbit IgG (H+L) (AS007) at 1:500 dilution. Blue: DAPI for nuclear staining.