

# PORCN Rabbit pAb

Catalog No.: A12250

## Basic Information

### Observed MW

52kDa

### Calculated MW

52kDa

### Category

Primary antibody

### Applications

WB, ELISA

### Cross-Reactivity

Mouse, Rat

## Background

This gene belongs to the evolutionarily conserved porcupine (Porc) gene family. Genes of the porcupine family encode endoplasmic reticulum proteins with multiple transmembrane domains. Porcupine proteins are involved in the processing of Wnt (wingless and int homologue) proteins. Disruption of this gene is associated with focal dermal hypoplasia, and the encoded protein has been implicated in cancer. Multiple alternatively spliced transcript variants encoding distinct isoforms have been observed.

## Recommended Dilutions

**WB** 1:500 - 1:1000

**ELISA** Recommended starting concentration is 1 µg/mL. Please optimize the concentration based on your specific assay requirements.

## Immunogen Information

### Gene ID

64840

### Swiss Prot

Q9H237

### Immunogen

Recombinant protein (or fragment). This information is considered to be commercially sensitive.

### Synonyms

PPN; DHOF; FODH; MG61; PORC; PORCN

## Contact

☎ | 400-999-6126

✉ | [cn.market@abclonal.com.cn](mailto:cn.market@abclonal.com.cn)

🌐 | [www.abclonal.com.cn](http://www.abclonal.com.cn)

## Product Information

### Source

Rabbit

### Isotype

IgG

### Purification

Affinity purification

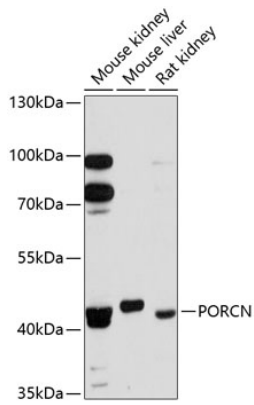
### Storage

Store at -20°C. Avoid freeze / thaw cycles.

Buffer: PBS with 0.01% thimerosal, 50% glycerol, pH7.3.

## Validation Data

---



Western blot analysis of various lysates using PORCN Rabbit pAb (A12250) at 1:3000 dilution.  
Secondary antibody: HRP-conjugated Goat anti-Rabbit IgG (H+L) (AS014) at 1:10000 dilution.  
Lysates/proteins: 25µg per lane.  
Blocking buffer: 3% nonfat dry milk in TBST.  
Detection: ECL Enhanced Kit (RM00021).  
Exposure time: 90s.