

RAB25 Rabbit pAb

Catalog No.: A12275 **1 Publications**

Basic Information

Observed MW

23kDa

Calculated MW

23kDa

Category

Primary antibody

Applications

ELISA, WB

Cross-Reactivity

Mouse, Rat

Background

The protein encoded by this gene is a member of the RAS superfamily of small GTPases. The encoded protein is involved in membrane trafficking and cell survival. This gene has been found to be a tumor suppressor and an oncogene, depending on the context. Two variants, one protein-coding and the other not, have been found for this gene.

Recommended Dilutions

WB 1:500 - 1:2000

Immunogen Information

Gene ID

57111

Swiss Prot

P57735

Immunogen

Recombinant fusion protein containing a sequence corresponding to amino acids 1-213 of human RAB25 (NP_065120.2).

Synonyms

CATX-8; RAB11C; RAB25

Contact

 | 400-999-6126

 | cn.market@abclonal.com.cn

 | www.abclonal.com.cn

Product Information

Source

Rabbit

Isotype

IgG

Purification

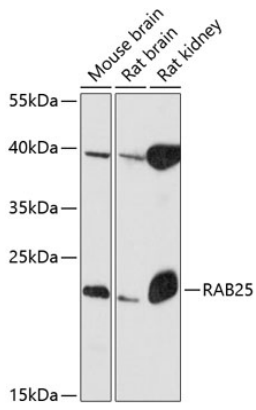
Affinity purification

Storage

Store at -20°C. Avoid freeze / thaw cycles.

Buffer: PBS with 0.01% thimerosal, 50% glycerol, pH7.3.

Validation Data



Western blot analysis of various lysates using RAB25 Rabbit pAb (A12275) at 1:3000 dilution.
Secondary antibody: HRP Goat Anti-Rabbit IgG (H+L) (AS014) at 1:10000 dilution.
Lysates/proteins: 25 μ g per lane.
Blocking buffer: 3% nonfat dry milk in TBST.
Detection: ECL Basic Kit (RM00020).
Exposure time: 90s.