

DPYSL3 Rabbit pAb

Catalog No.: A12280

Basic Information

Observed MW

62kDa

Calculated MW

62kDa

Category

Primary antibody

Applications

ELISA, WB

Cross-Reactivity

Mouse, Rat

Background

Enables filamin binding activity. Predicted to be involved in several processes, including actin filament organization; regulation of plasma membrane bounded cell projection organization; and response to axon injury. Predicted to act upstream of or within nervous system development. Predicted to be located in several cellular components, including cell body; growth cone; and lamellipodium. Predicted to be part of filamentous actin. Predicted to be active in synapse. Predicted to colocalize with exocytic vesicle.

Recommended Dilutions

WB 1:500 - 1:2000

Immunogen Information

Gene ID

1809

Swiss Prot

Q14195

Immunogen

Recombinant fusion protein containing a sequence corresponding to amino acids 440-520 of human DPYSL3 (NP_001378.1).

Synonyms

DRP3; ULIP; CRMP4; DRP-3; LCRMP; CRMP-4; ULIP-1; DPYSL3

Contact

☎ | 400-999-6126

✉ | cn.market@abclonal.com.cn

🌐 | www.abclonal.com.cn

Product Information

Source

Rabbit

Isotype

IgG

Purification

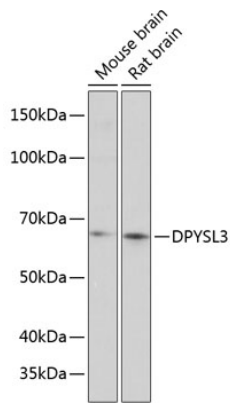
Affinity purification

Storage

Store at -20°C. Avoid freeze / thaw cycles.

Buffer: PBS with 0.01% thimerosal, 50% glycerol, pH7.3.

Validation Data



Western blot analysis of various lysates using DPYSL3 Rabbit pAb (A12280) at 1:1000 dilution.
Secondary antibody: HRP Goat Anti-Rabbit IgG (H+L) (AS014) at 1:10000 dilution.
Lysates/proteins: 25µg per lane.
Blocking buffer: 3% nonfat dry milk in TBST.
Detection: ECL Basic Kit (RM00020).
Exposure time: 3min.