

# β-Tubulin Rabbit mAb

Catalog No.: A12289 **Recombinant** **40 Publications**

## Basic Information

### Observed MW

55kDa

### Calculated MW

50kDa

### Category

Primary antibody

### Applications

WB,IHC-P,IF/ICC,IP,ELISA

### Cross-Reactivity

Human, Mouse, Rat

### CloneNo number

ARC0203

## Background

This gene encodes a beta tubulin protein. This protein forms a dimer with alpha tubulin and acts as a structural component of microtubules. Mutations in this gene cause cortical dysplasia, complex, with other brain malformations 6. Alternative splicing results in multiple splice variants. There are multiple pseudogenes for this gene on chromosomes 1, 6, 7, 8, 9, and 13.

## Recommended Dilutions

**WB** 1:5000 - 1:10000

**IHC-P** 1:50 - 1:200

**IP** 0.5μg-4μg antibody for 200μg-400μg extracts of whole cells

**ELISA** Recommended starting concentration is 1 μg/mL. Please optimize the concentration based on your specific assay requirements.

## Immunogen Information

### Gene ID

203068

### Swiss Prot

P07437

### Immunogen

A synthetic peptide corresponding to a sequence within amino acids 250-350 of human β-Tubulin (P07437).

### Synonyms

M40; TUBB1; TUBB5; CDCBM6; CSCSC1; OK/SW-cl.56; β-Tubulin

## Contact

☎ | 400-999-6126

✉ | [cn.market@abclonal.com.cn](mailto:cn.market@abclonal.com.cn)

🌐 | [www.abclonal.com.cn](http://www.abclonal.com.cn)

## Product Information

### Source

Rabbit

### Isotype

IgG

### Purification

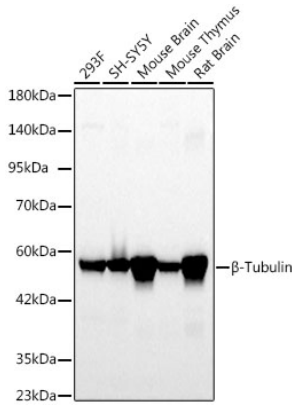
Affinity purification

### Storage

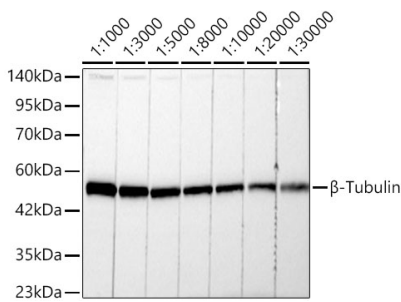
Store at -20°C. Avoid freeze / thaw cycles.

Buffer: PBS with 0.02% Sodium azide,0.05% BSA,50% glycerol,pH7.3.

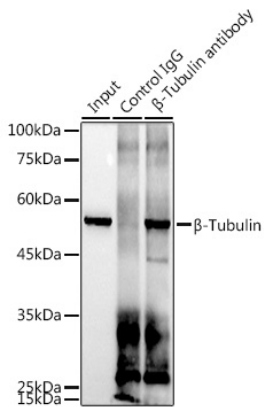
## Validation Data



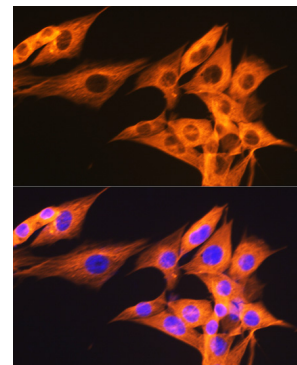
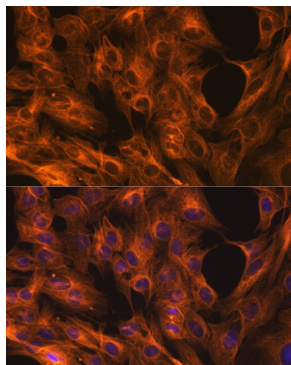
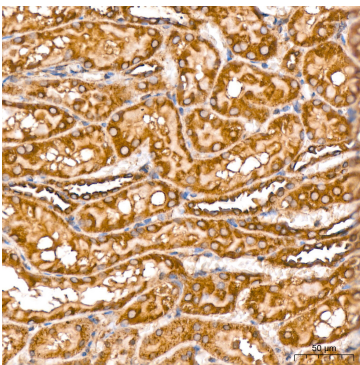
Western blot analysis of various lysates using  $\beta$ -Tubulin Rabbit mAb (A12289) at 1:5000 dilution.  
 Secondary antibody: HRP-conjugated Goat anti-Rabbit IgG (H+L) (AS014) at 1:10000 dilution.  
 Lysates/proteins: 25 $\mu$ g per lane.  
 Blocking buffer: 3% nonfat dry milk in TBST.  
 Detection: ECL Basic Kit (RM00020).  
 Exposure time: 20s.



Western blot analysis of lysates from 293F cells, using  $\beta$ -Tubulin Rabbit mAb (A12289) at 1:1000-1:30000 dilution.  
 Secondary antibody: HRP-conjugated Goat anti-Rabbit IgG (H+L) (AS014) at 1:10000 dilution.  
 Lysates/proteins: 25 $\mu$ g per lane.  
 Blocking buffer: 3% nonfat dry milk in TBST.  
 Detection: ECL Basic Kit (RM00020).  
 Exposure time: 10s.



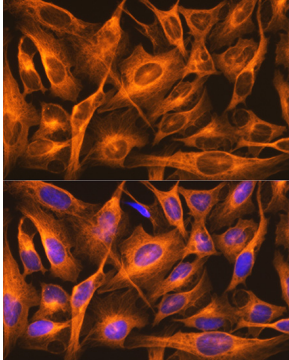
Immunoprecipitation analysis of 300  $\mu$ g extracts of 293T cells using 3  $\mu$ g  $\beta$ -Tubulin antibody (A12289).  
 Western blot was performed from the immunoprecipitate using  $\beta$ -Tubulin antibody (A12289) at a dilution of 1:1000.



## Validation Data

---

Immunohistochemistry analysis of paraffin-embedded Rat kidney tissue using  $\beta$ -Tubulin Rabbit mAb (A12289) at a dilution of 1:200 (40x lens). High pressure antigen retrieval performed with 0.01M Citrate Bufferr (pH 6.0) prior to IHC staining.



Immunofluorescence analysis of C6 cells using  $\beta$ -Tubulin Rabbit mAb (A12289) at dilution of 1:100. Blue: DAPI for nuclear staining.

Immunofluorescence analysis of NIH/3T3 cells using  $\beta$ -Tubulin Rabbit mAb (A12289) at dilution of 1:100. Blue: DAPI for nuclear staining.

Immunofluorescence analysis of U2OS cells using  $\beta$ -Tubulin Rabbit mAb (A12289) at dilution of 1:100. Blue: DAPI for nuclear staining.