

SFXN3 Rabbit pAb

Catalog No.: A12298

Basic Information

Observed MW

36kDa

Calculated MW

36kDa

Category

Primary antibody

Applications

ELISA, WB

Cross-Reactivity

Human

Background

Enables serine transmembrane transporter activity. Involved in serine import into mitochondrion. Located in mitochondrion.

Recommended Dilutions

WB 1:500 - 1:1000

Immunogen Information

Gene ID

81855

Swiss Prot

Q9BWM7

Immunogen

Recombinant fusion protein containing a sequence corresponding to amino acids 1-80 of human SFXN3 (NP_112233.2).

Synonyms

SFX3; SLC56A3; BA108L7.2; SFXN3

Contact

 | 400-999-6126

 | cn.market@abclonal.com.cn

 | www.abclonal.com.cn

Product Information

Source

Rabbit

Isotype

IgG

Purification

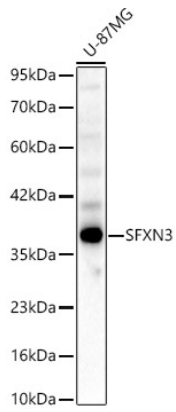
Affinity purification

Storage

Store at -20°C. Avoid freeze / thaw cycles.

Buffer: PBS with 0.01% thimerosal, 50% glycerol, pH7.3.

Validation Data



Western blot analysis of lysates from U-87MG cells, using SFXN3 Rabbit pAb (A12298) at 1:1000 dilution.
Secondary antibody: HRP Goat Anti-Rabbit IgG (H+L) (AS014) at 1:10000 dilution.
Lysates/proteins: 25ug per lane.
Blocking buffer: 3% nonfat dry milk in TBST.
Detection: ECL Basic Kit (RM00020).
Exposure time: 45s.