

SLC12A7 Rabbit pAb

Catalog No.: A12299

Basic Information

Observed MW

119kDa

Calculated MW

119kDa

Category

Primary antibody

Applications

ELISA, WB

Cross-Reactivity

Human, Mouse, Rat

Background

Enables protein kinase binding activity. Predicted to be involved in several processes, including cell volume homeostasis; inorganic ion homeostasis; and inorganic ion transmembrane transport. Part of protein-containing complex.

Recommended Dilutions

WB 1:500 - 1:2000

Immunogen Information

Gene ID

10723

Swiss Prot

Q9Y666

Immunogen

Recombinant fusion protein containing a sequence corresponding to amino acids 1-70 of human SLC12A7 (NP_006589.2).

Synonyms

KCC4; SLC12A7

Contact

 | 400-999-6126

 | cn.market@abclonal.com.cn

 | www.abclonal.com.cn

Product Information

Source

Rabbit

Isotype

IgG

Purification

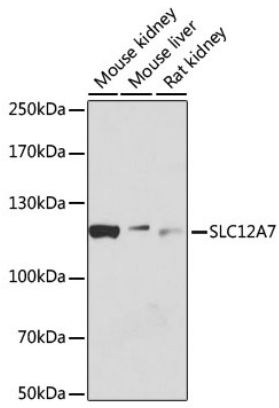
Affinity purification

Storage

Store at -20°C. Avoid freeze / thaw cycles.

Buffer: PBS with 0.09% Sodium azide, 50% glycerol, pH7.3.

Validation Data



Western blot analysis of various lysates using SLC12A7 Rabbit pAb (A12299) at 1:1000 dilution.
Secondary antibody: HRP-conjugated Goat anti-Rabbit IgG (H+L) (AS014) at 1:10000 dilution.
Lysates/proteins: 25 μ g per lane.
Blocking buffer: 3% nonfat dry milk in TBST.
Detection: ECL Basic Kit (RM00020).
Exposure time: 30s.