

# CDC20 Rabbit pAb

Catalog No.: A1231 **1 Publications**

## Basic Information

### Observed MW

55kDa

### Calculated MW

55kDa

### Category

Primary antibody

### Applications

ELISA, WB, IF/ICC

### Cross-Reactivity

Human, Mouse

## Background

CDC20 appears to act as a regulatory protein interacting with several other proteins at multiple points in the cell cycle. It is required for two microtubule-dependent processes, nuclear movement prior to anaphase and chromosome separation.

## Recommended Dilutions

**WB** 1:500 - 1:2000

**IF/ICC** 1:50 - 1:200

## Immunogen Information

### Gene ID

991

### Swiss Prot

Q12834

### Immunogen

Recombinant fusion protein containing a sequence corresponding to amino acids 1-270 of human CDC20 (NP\_001246.2).

### Synonyms

CDC20A; OOMD14; p55CDC; OZEMA14; bA276H19.3; CDC20

## Contact

☎ | 400-999-6126

✉ | [cn.market@abclonal.com.cn](mailto:cn.market@abclonal.com.cn)

🌐 | [www.abclonal.com.cn](http://www.abclonal.com.cn)

## Product Information

### Source

Rabbit

### Isotype

IgG

### Purification

Affinity purification

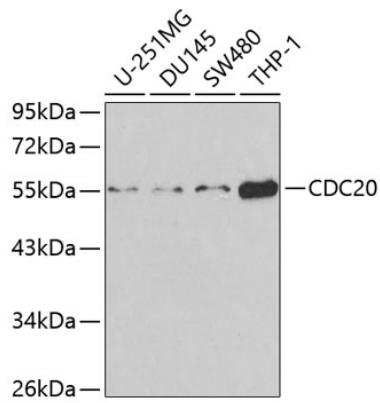
### Storage

Store at -20°C. Avoid freeze / thaw cycles.

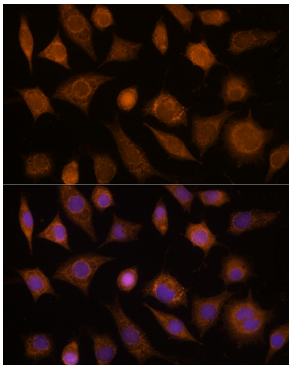
Buffer: PBS with 0.02% sodium azide, 50% glycerol, pH 7.3.

## Validation Data

---



Western blot analysis of extracts of various cell lines, using CDC20 antibody (A1231) at 1:1000 dilution.  
Secondary antibody: HRP Goat Anti-Rabbit IgG (H+L) (AS014) at 1:10000 dilution.  
Lysates/proteins: 25µg per lane.  
Blocking buffer: 3% nonfat dry milk in TBST.



Immunofluorescence analysis of L929 cells using CDC20 Rabbit pAb (A1231) at dilution of 100 (40x lens). Blue: DAPI for nuclear staining.