

LGR5/GPR49 Rabbit mAb

Catalog No.: A12327 **Recombinant** **5 Publications**

Basic Information

Observed MW

110 kDa

Calculated MW

100 kDa

Category

Primary antibody

Applications

WB,Auto WB,ELISA

Cross-Reactivity

Mouse, Rat

CloneNo number

ARC0321

Background

The protein encoded by this gene is a leucine-rich repeat-containing receptor (LGR) and member of the G protein-coupled, 7-transmembrane receptor (GPCR) superfamily. The encoded protein is a receptor for R-spondins and is involved in the canonical Wnt signaling pathway. This protein plays a role in the formation and maintenance of adult intestinal stem cells during postembryonic development. Several transcript variants encoding different isoforms have been found for this gene.

Recommended Dilutions

WB 1:1000 - 1:6000

Auto WB 1:100 - 1:500

ELISA Recommended starting concentration is 1 µg/mL. Please optimize the concentration based on your specific assay requirements.

Immunogen Information

Gene ID

8549

Swiss Prot

O75473

Immunogen

Synthetic peptide. This information is considered to be commercially sensitive.

Synonyms

FEX; HG38; GPR49; GPR67; GRP49; LGR5/GPR49

Contact

☎ | 400-999-6126

✉ | cn.market@abclonal.com.cn

🌐 | www.abclonal.com.cn

Product Information

Source

Rabbit

Isotype

IgG

Purification

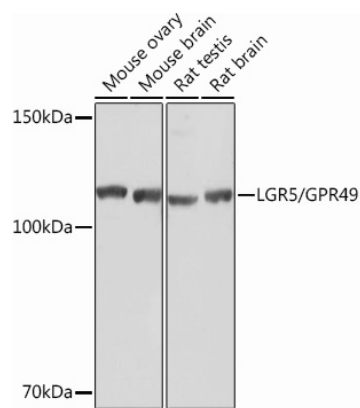
Affinity purification

Storage

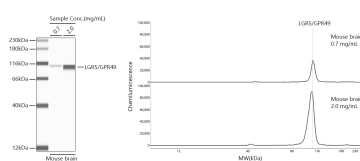
Store at -20°C. Avoid freeze / thaw cycles.

Buffer: PBS containing 50% glycerol and 0.05% BSA, preserved with proclin300 or sodium azide (as specified on the Certificate of Analysis), pH 7.3.

Validation Data



Western blot analysis of various lysates using LGR5/GPR49 Rabbit mAb (A12327) at 1:1000 dilution. Secondary antibody: HRP-conjugated Goat anti-Rabbit IgG (H+L) (AS014) at 1:10000 dilution. Lysates/proteins: 25µg per lane. Blocking buffer: 3% nonfat dry milk in TBST. Detection: ECL Basic Kit (RM00020). Exposure time: 1s.



Simple Western™ analysis of lysates from Mouse brain using LGR5/GPR49 Rabbit mAb (A12327) at 1:100 dilution. The virtual lane view (left) shows the target band (as indicated) with samples in concentrations of 0.7 mg/mL and 2.0 mg/mL. The corresponding electropherogram view (right) plots chemiluminescence intensity against molecular weight along the capillary for sample concentrations of 0.7 mg/mL and 2.0 mg/mL. This experiment was performed under reducing conditions on the Jess™ Simple Western instrument from ProteinSimple, a BioTechne brand, using the 12-230 kDa separation module.