

ENPEP Rabbit pAb

Catalog No.: A12339

Basic Information

Observed MW

109kDa

Calculated MW

109kDa

Category

Primary antibody

Applications

ELISA, WB

Cross-Reactivity

Human, Mouse

Background

The ENPEP gene encodes glutamyl aminopeptidase, a type II integral membrane protein with an extracellular zinc-binding domain. This protein can upregulate blood pressure by cleaving the N-terminal aspartate from angiotensin II, and can regulate blood vessel formation and enhance tumorigenesis in some tissues. Along with ANPEP and DPP4, ENPEP was found to be a candidate co-receptor for the coronavirus SARS-CoV-2, which causes COVID-19.

Recommended Dilutions

WB 1:500 - 1:2000

Immunogen Information

Gene ID

2028

Swiss Prot

Q07075

Immunogen

A synthetic peptide corresponding to a sequence within amino acids 850-950 of human ENPEP (NP_001968.3).

Synonyms

APA; CD249; gp160; ENPEP

Contact

☎ | 400-999-6126

✉ | cn.market@abclonal.com.cn

🌐 | www.abclonal.com.cn

Product Information

Source

Rabbit

Isotype

IgG

Purification

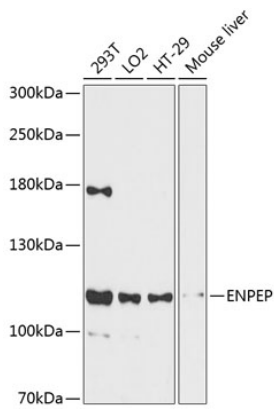
Affinity purification

Storage

Store at -20°C. Avoid freeze / thaw cycles.

Buffer: PBS with 0.01% thimerosal, 50% glycerol, pH7.3.

Validation Data



Western blot analysis of various lysates using ENPEP Rabbit pAb (A12339) at 1:3000 dilution.
Secondary antibody: HRP Goat Anti-Rabbit IgG (H+L) (AS014) at 1:10000 dilution.
Lysates/proteins: 25µg per lane.
Blocking buffer: 3% nonfat dry milk in TBST.
Detection: ECL Basic Kit (RM00020).
Exposure time: 90s.