

# NSD3/WHSC1L1 Rabbit mAb

Catalog No.: A12342 **Recombinant**

## Basic Information

**Observed MW**  
80-100kDa/200kDa

**Calculated MW**  
162kDa

**Category**  
Primary antibody

**Applications**  
ELISA, WB

**Cross-Reactivity**  
Human, Mouse, Rat

**CloneNo number**  
ARC0707

## Background

This gene is related to the Wolf-Hirschhorn syndrome candidate-1 gene and encodes a protein with PWWP (proline-tryptophan-tryptophan-proline) domains. This protein methylates histone H3 at lysine residues 4 and 27, which represses gene transcription. Two alternatively spliced variants have been described.

## Recommended Dilutions

**WB** 1:500 - 1:1000

## Immunogen Information

**Gene ID**  
54904

**Swiss Prot**  
Q9BZ95

### Immunogen

A synthetic peptide corresponding to a sequence within amino acids 1-100 of human NSD3/WHSC1L1 (Q9BZ95).

### Synonyms

KMT3F; KMT3G; WHISTLE; WHSC1L1; pp14328; NSD3/WHSC1L1

## Contact

 | 400-999-6126

 | [cn.market@abclonal.com.cn](mailto:cn.market@abclonal.com.cn)

 | [www.abclonal.com.cn](http://www.abclonal.com.cn)

## Product Information

**Source**  
Rabbit

**Isotype**  
IgG

**Purification**  
Affinity purification

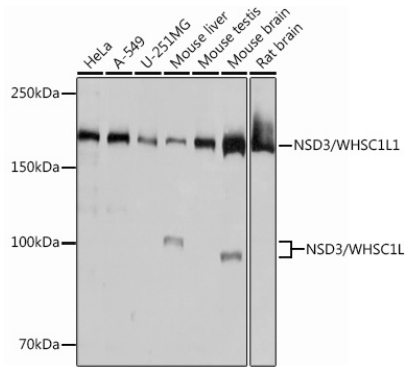
### Storage

Store at -20°C. Avoid freeze / thaw cycles.

Buffer: PBS with 0.02% sodium azide, 0.05% BSA, 50% glycerol, pH7.3.

## Validation Data

---



Western blot analysis of extracts of various cell lines, using NSD3/WHSC1L1 Rabbit mAb (A12342) at 1:10000 dilution.

Secondary antibody: HRP Goat Anti-Rabbit IgG (H+L) (AS014) at 1:10000 dilution.

Lysates/proteins: 25µg per lane.

Blocking buffer: 3% nonfat dry milk in TBST.

Detection: ECL Basic Kit (RM00020).

Exposure time: 3s.