

MYBPC3 Rabbit pAb

Catalog No.: A12351

Basic Information

Observed MW

170kDa

Calculated MW

141kDa

Category

Primary antibody

Applications

ELISA, WB, IHC-P

Cross-Reactivity

Mouse, Rat

Background

MYBPC3 encodes the cardiac isoform of myosin-binding protein C. Myosin-binding protein C is a myosin-associated protein found in the cross-bridge-bearing zone (C region) of A bands in striated muscle. MYBPC3 is expressed exclusively in heart muscle and is a key regulator of cardiac contraction. Mutations in this gene are a frequent cause of familial hypertrophic cardiomyopathy.

Recommended Dilutions

| | |
|-------|----------------|
| WB | 1:500 - 1:2000 |
| IHC-P | 1:50 - 1:200 |

Immunogen Information

Gene ID

4607

Swiss Prot

Q14896

Immunogen

Recombinant fusion protein containing a sequence corresponding to amino acids 200-400 of human MYBPC3 (NP_000247.2).

Synonyms

FHC; CMH4; CMD1MM; LVNC10; MYBP-C; cMyBP-C; MYBPC3

Contact

 | 400-999-6126

 | cn.market@abclonal.com.cn

 | www.abclonal.com.cn

Product Information

Source

Rabbit

Isotype

IgG

Purification

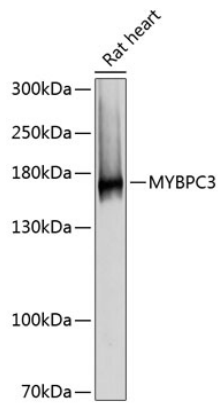
Affinity purification

Storage

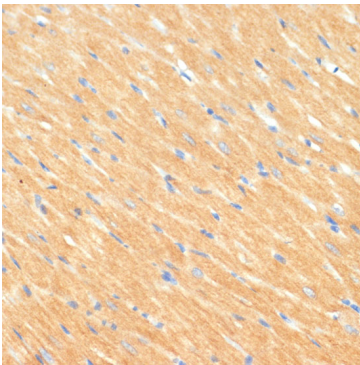
Store at -20°C. Avoid freeze / thaw cycles.

Buffer: PBS with 0.02% sodium azide, 50% glycerol, pH 7.3.

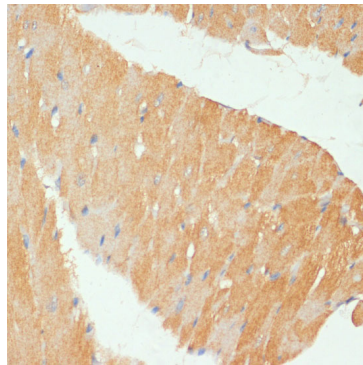
Validation Data



Western blot analysis of lysates from rat heart, using MYBPC3 Rabbit pAb (A12351) at 1:3000 dilution.
Secondary antibody: HRP Goat Anti-Rabbit IgG (H+L) (AS014) at 1:10000 dilution.
Lysates/proteins: 25µg per lane.
Blocking buffer: 3% nonfat dry milk in TBST.
Detection: ECL Basic Kit (RM00020).
Exposure time: 1s.



Immunohistochemistry analysis of paraffin-embedded rat heart using MYBPC3 Rabbit pAb (A12351) at dilution of 1:100 (40x lens). Perform microwave antigen retrieval with 10 mM PBS buffer pH 7.2 before commencing with IHC staining protocol.



Immunohistochemistry analysis of paraffin-embedded mouse heart using MYBPC3 Rabbit pAb (A12351) at dilution of 1:100 (40x lens). Perform microwave antigen retrieval with 10 mM PBS buffer pH 7.2 before commencing with IHC staining protocol.