

alpha 1 Spectrin Rabbit pAb

Catalog No.: A12355 **2 Publications**

Basic Information

Observed MW

300kDa

Calculated MW

280kDa

Category

Primary antibody

Applications

WB, IHC-P, IF/ICC, ELISA

Cross-Reactivity

Human, Mouse, Rat

Background

This gene encodes a member of a family of molecular scaffold proteins that link the plasma membrane to the actin cytoskeleton and functions in the determination of cell shape, arrangement of transmembrane proteins, and organization of organelles. The encoded protein is primarily composed of 22 spectrin repeats which are involved in dimer formation. It forms a component of the erythrocyte plasma membrane. Mutations in this gene result in a variety of hereditary red blood cell disorders, including elliptocytosis-2, pyropoikilocytosis, and spherocytosis, type 3.

Recommended Dilutions

| | |
|---------------|---|
| WB | 1:500 - 1:2000 |
| IHC-P | 1:50 - 1:200 |
| IF/ICC | 1:50 - 1:200 |
| ELISA | Recommended starting concentration is 1 µg/mL. Please optimize the concentration based on your specific assay requirements. |

Contact

| | |
|--|--|
|  | 400-999-6126 |
|  | cn.market@abclonal.com.cn |
|  | www.abclonal.com.cn |

Immunogen Information

Gene ID

6708

Swiss Prot

P02549

Immunogen

Recombinant fusion protein containing a sequence corresponding to amino acids 940-1160 of human alpha 1 Spectrin (NP_003117.2).

Synonyms

EL2; HPP; HS3; SPH3; SPTA; alpha 1 Spectrin

Product Information

Source

Rabbit

Isotype

IgG

Purification

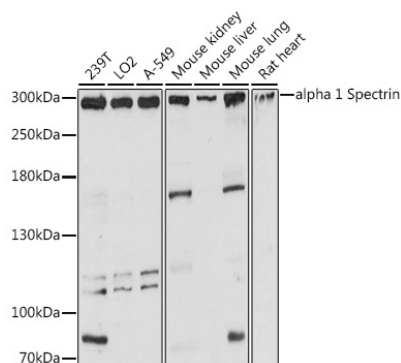
Affinity purification

Storage

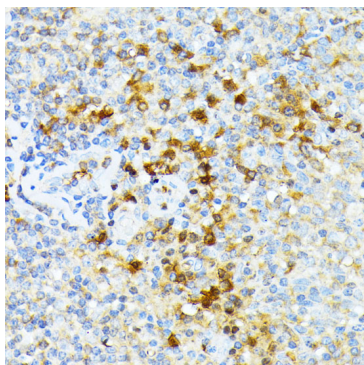
Store at -20°C. Avoid freeze / thaw cycles.

Buffer: PBS with 0.09% Sodium azide, 50% glycerol, pH7.3.

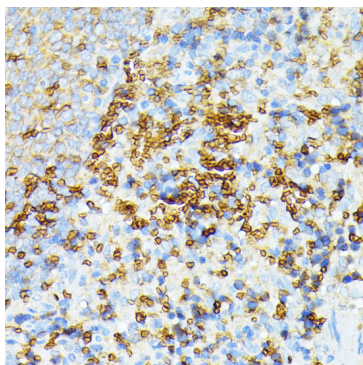
Validation Data



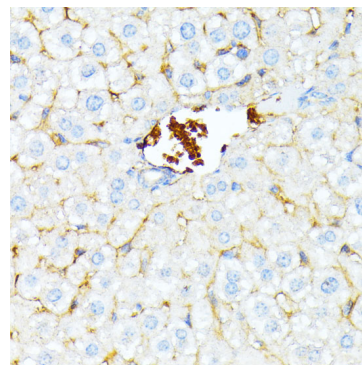
Western blot analysis of various lysates using alpha 1 Spectrin Rabbit pAb (A12355) at 1:3000 dilution. Secondary antibody: HRP-conjugated Goat anti-Rabbit IgG (H+L) (AS014) at 1:10000 dilution. Lysates/proteins: 25µg per lane. Blocking buffer: 3% nonfat dry milk in TBST. Detection: ECL Basic Kit (RM00020). Exposure time: 10s.



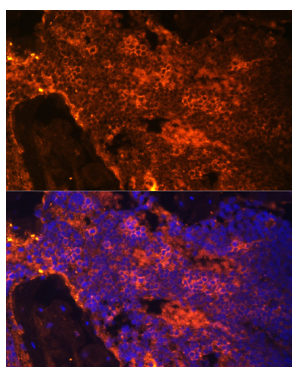
Immunohistochemistry analysis of paraffin-embedded Human tonsil using alpha 1 Spectrin Rabbit pAb (A12355) at dilution of 1:100 (40x lens). Microwave antigen retrieval performed with 0.01M PBS Buffer (pH 7.2) prior to IHC staining.



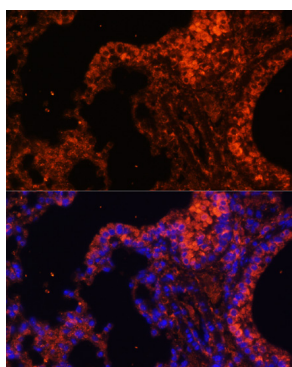
Immunohistochemistry analysis of paraffin-embedded Rat spleen using alpha 1 Spectrin Rabbit pAb (A12355) at dilution of 1:100 (40x lens). Microwave antigen retrieval performed with 0.01M PBS Buffer (pH 7.2) prior to IHC staining.



Immunohistochemistry analysis of paraffin-embedded Mouse liver using alpha 1 Spectrin Rabbit pAb (A12355) at dilution of 1:100 (40x lens). Microwave antigen retrieval performed with 0.01M PBS Buffer (pH 7.2) prior to IHC staining.



Immunofluorescence analysis of paraffin-embedded rat bone marrow using alpha 1 Spectrin Rabbit pAb (A12355) at dilution of 1:100. Secondary antibody: Cy3-conjugated Goat anti-Rabbit IgG (H+L) (AS007) at 1:500 dilution. Blue: DAPI for nuclear staining.



Immunofluorescence analysis of paraffin-embedded mouse lung using alpha 1 Spectrin Rabbit pAb (A12355) at dilution of 1:100. Secondary antibody: Cy3-conjugated Goat anti-Rabbit IgG (H+L) (AS007) at 1:500 dilution. Blue: DAPI for nuclear staining.