

SLC25A19 Rabbit pAb

Catalog No.: A12373 **1 Publications**

Basic Information

Observed MW

36kDa

Calculated MW

36kDa

Category

Primary antibody

Applications

ELISA, WB, IF/ICC

Cross-Reactivity

Human, Mouse

Background

This gene encodes a mitochondrial protein that is a member of the solute carrier family. Although this protein was initially thought to be the mitochondrial deoxynucleotide carrier involved in the uptake of deoxynucleotides into the matrix of the mitochondria, further studies have demonstrated that this protein instead functions as the mitochondrial thiamine pyrophosphate carrier, which transports thiamine pyrophosphates into mitochondria. Mutations in this gene cause microcephaly, Amish type, a metabolic disease that results in severe congenital microcephaly, severe 2-ketoglutaric aciduria, and death within the first year. Multiple alternatively spliced variants, encoding the same protein, have been identified for this gene.

Recommended Dilutions

WB 1:500 - 1:2000**IF/ICC** 1:50 - 1:200

Immunogen Information

Gene ID

60386

Swiss Prot

Q9HC21

Immunogen

Recombinant fusion protein containing a sequence corresponding to amino acids 1-80 of human SLC25A19 (NP_068380.3).

Synonyms

DNC; TPC; MUP1; MCPHA; MTPPT; THMD3; THMD4; SLC25A19

Contact

 | 400-999-6126 | cn.market@abclonal.com.cn | www.abclonal.com.cn

Product Information

Source

Rabbit

Isotype

IgG

Purification

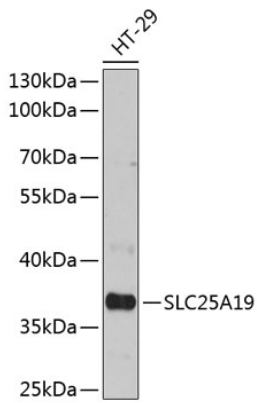
Affinity purification

Storage

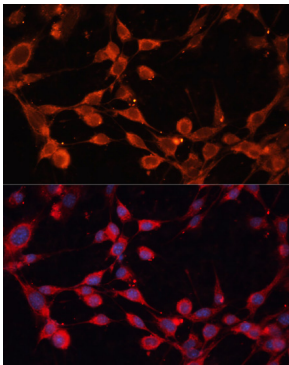
Store at -20°C. Avoid freeze / thaw cycles.

Buffer: PBS with 0.01% thimerosal, 50% glycerol, pH7.3.

Validation Data



Western blot analysis of lysates from HT-29 cells, using SLC25A19 Rabbit pAb (A12373) at 1:3000 dilution.
Secondary antibody: HRP Goat Anti-Rabbit IgG (H+L) (AS014) at 1:10000 dilution.
Lysates/proteins: 25µg per lane.
Blocking buffer: 3% nonfat dry milk in TBST.
Detection: ECL Basic Kit (RM00020).
Exposure time: 30s.



Immunofluorescence analysis of NIH/3T3 cells using SLC25A19 Rabbit pAb (A12373) at dilution of 1:100. Secondary antibody: Cy3 Goat Anti-Rabbit IgG (H+L) (AS007) at 1:500 dilution. Blue: DAPI for nuclear staining.