

F2 Rabbit pAb

Catalog No.: A12382

Basic Information

Observed MW

75kDa

Calculated MW

70kDa

Category

Primary antibody

Applications

ELISA,WB

Cross-Reactivity

Human

Background

This gene encodes the prothrombin protein (also known as coagulation factor II). This protein is proteolytically cleaved in multiple steps to form the activated serine protease thrombin. The activated thrombin enzyme plays an important role in thrombosis and hemostasis by converting fibrinogen to fibrin during blood clot formation, by stimulating platelet aggregation, and by activating additional coagulation factors. Thrombin also plays a role in cell proliferation, tissue repair, and angiogenesis as well as maintaining vascular integrity during development and postnatal life. Peptides derived from the C-terminus of this protein have antimicrobial activity against *E. coli* and *P. aeruginosa*. Mutations in this gene lead to various forms of thrombosis and dysprothrombinemia. Rapid increases in cytokine levels following coronavirus infections can dysregulate the coagulation cascade and produce thrombosis, compromised blood supply, and organ failure.

Recommended Dilutions

WB 1:100 - 1:500

Immunogen Information

Gene ID

2147

Swiss Prot

P00734

Immunogen

Recombinant fusion protein containing a sequence corresponding to amino acids 364-622 of human F2 (NP_000497.1).

Synonyms

PT; THPH1; RPRGL2; F2

Contact

 | 400-999-6126 | cn.market@abclonal.com.cn | www.abclonal.com.cn

Product Information

Source

Rabbit

Isotype

IgG

Purification

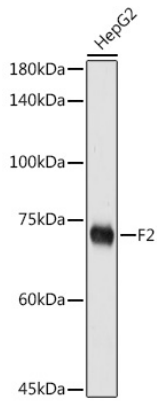
Affinity purification

Storage

Store at -20°C. Avoid freeze / thaw cycles.

Buffer: PBS with 0.01% thimerosal, 50% glycerol, pH 7.3.

Validation Data



Western blot analysis of lysates from HepG2 cells, using F2 Rabbit pAb (A12382) at 1:500 dilution.
Secondary antibody: HRP Goat Anti-Rabbit IgG (H+L) (AS014) at 1:10000 dilution.
Lysates/proteins: 25µg per lane.
Blocking buffer: 3% nonfat dry milk in TBST.
Detection: ECL Basic Kit (RM00020).
Exposure time: 180s.