

SIGLEC6 Rabbit pAb

Catalog No.: A12387

Basic Information

Observed MW

72kDa

Calculated MW

50kDa

Category

Primary antibody

Applications

ELISA, WB

Cross-Reactivity

Human

Background

This gene encodes a member of the SIGLEC (sialic acid binding immunoglobulin-like lectin) family of proteins. The encoded transmembrane receptor binds sialyl-TN glycans and leptin. Placental expression of the encoded protein is upregulated in preeclampsia.

Recommended Dilutions

WB 1:500 - 1:1000

Immunogen Information

Gene ID

946

Swiss Prot

O43699

Immunogen

Recombinant fusion protein containing a sequence corresponding to amino acids 27-220 of human SIGLEC6 (NP_942142.3).

Synonyms

CD327; CD33L; OBBP1; CD33L1; CD33L2; CDW327; SIGLEC6

Contact

☎ | 400-999-6126

✉ | cn.market@abclonal.com.cn

🌐 | www.abclonal.com.cn

Product Information

Source

Rabbit

Isotype

IgG

Purification

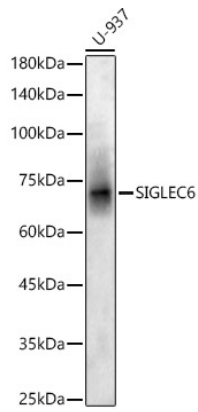
Affinity purification

Storage

Store at -20°C. Avoid freeze / thaw cycles.

Buffer: PBS with 0.02% sodium azide, 50% glycerol, pH7.3.

Validation Data



Western blot analysis of lysates from U-937 cells, using SIGLEC6 Rabbit pAb (A12387) at 1:700 dilution.
Secondary antibody: HRP Goat Anti-Rabbit IgG (H+L) (AS014) at 1:10000 dilution.
Lysates/proteins: 25µg per lane.
Blocking buffer: 3% nonfat dry milk in TBST.
Detection: ECL Basic Kit (RM00020).
Exposure time: 180s.