

CALU Rabbit pAb

Catalog No.: A12408

Basic Information

Observed MW

Refer to figures

Calculated MW

37kDa

Category

Primary antibody

Applications

IF/ICC,ELISA

Cross-Reactivity

Human, Rat

Background

The product of this gene is a calcium-binding protein localized in the endoplasmic reticulum (ER) and it is involved in such ER functions as protein folding and sorting. This protein belongs to a family of multiple EF-hand proteins (CERC) that include reticulocalbin, ERC-55, and Cab45 and the product of this gene. Alternatively spliced transcript variants encoding different isoforms have been identified.

Recommended Dilutions

IF/ICC 1:50 - 1:100

ELISA Recommended starting concentration is 1 µg/mL. Please optimize the concentration based on your specific assay requirements.

Immunogen Information

Gene ID

813

Swiss Prot

O43852

Immunogen

Recombinant protein (or fragment). This information is considered to be commercially sensitive.

Synonyms

CALU; calumenin

Contact

 | 400-999-6126

 | cn.market@abclonal.com.cn

 | www.abclonal.com.cn

Product Information

Source

Rabbit

Isotype

IgG

Purification

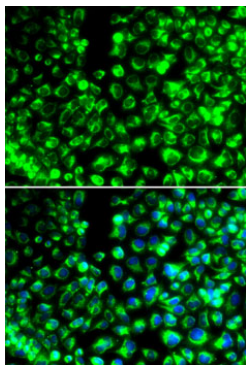
Affinity purification

Storage

Store at -20°C. Avoid freeze / thaw cycles.

Buffer: PBS with 0.02% sodium azide, 50% glycerol, pH 7.3.

Validation Data



Immunofluorescence analysis of HeLa cells using CALU Rabbit pAb (A12408). Secondary antibody: Cy3-conjugated Goat anti-Rabbit IgG (H+L) (AS007) at 1:500 dilution. Blue: DAPI for nuclear staining.