

DNA topoisomerase I (TOP1) Rabbit mAb

Catalog No.: A12409 **Recombinant** **3 Publications**

Basic Information

Observed MW

100kDa

Calculated MW

91kDa

Category

Primary antibody

Applications

WB,IHC-P,IF/ICC,IP,ELISA

Cross-Reactivity

Human, Mouse

CloneNo number

ARC0708

Background

This gene encodes a DNA topoisomerase, an enzyme that controls and alters the topologic states of DNA during transcription. This enzyme catalyzes the transient breaking and rejoining of a single strand of DNA which allows the strands to pass through one another, thus altering the topology of DNA. This gene is localized to chromosome 20 and has pseudogenes which reside on chromosomes 1 and 22.

Recommended Dilutions

WB	1:1000 - 1:6000
IHC-P	1:200 - 1:800
IF/ICC	1:100 - 1:1000
IP	0.5µg-4µg antibody for 200µg-400µg extracts of whole cells
ELISA	Recommended starting concentration is 1 µg/mL. Please optimize the concentration based on your specific assay requirements.

Contact

☎ | 400-999-6126

✉ | cn.market@abclonal.com.cn

🌐 | www.abclonal.com.cn

Immunogen Information

Gene ID

7150

Swiss Prot

P11387

Immunogen

A synthetic peptide corresponding to a sequence within amino acids 1-100 of human DNA topoisomerase I (TOP1) (P11387).

Synonyms

TOPI; DNA topoisomerase I (TOP1)

Product Information

Source

Rabbit

Isotype

IgG

Purification

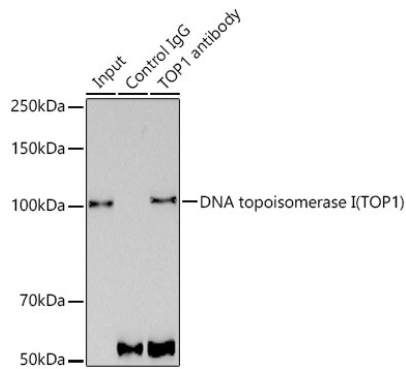
Affinity purification

Storage

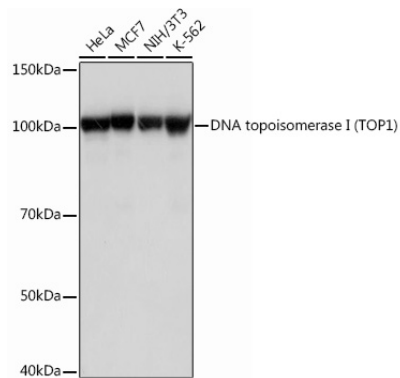
Store at -20°C. Avoid freeze / thaw cycles.

Buffer: PBS with 0.02% sodium azide,0.05% BSA,50% glycerol,pH7.3.

Validation Data



Immunoprecipitation analysis of 300 µg extracts of MCF7 cells using 3 µg DNA topoisomerase I (TOP1) antibody (A12409). Western blot was performed from the immunoprecipitate using DNA topoisomerase I (TOP1) antibody (A12409) at a dilution of 1:1000.



Western blot analysis of various lysates using DNA topoisomerase I (DNA topoisomerase I (TOP1)) Rabbit mAb (A12409) at 1:1000 dilution.

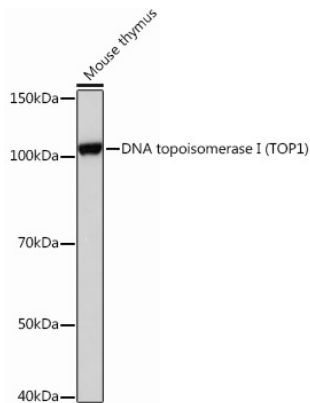
Secondary antibody: HRP-conjugated Goat anti-Rabbit IgG (H+L) (AS014) at 1:10000 dilution.

Lysates/proteins: 25µg per lane.

Blocking buffer: 3% nonfat dry milk in TBST.

Detection: ECL Basic Kit (RM00020).

Exposure time: 1s.



Western blot analysis of lysates from Mouse thymus, using DNA topoisomerase I (DNA topoisomerase I (TOP1)) Rabbit mAb (A12409) at 1:1000 dilution.

Secondary antibody: HRP-conjugated Goat anti-Rabbit IgG (H+L) (AS014) at 1:10000 dilution.

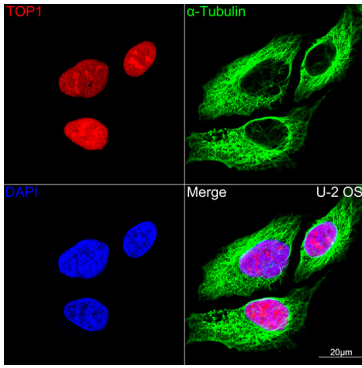
Lysates/proteins: 25µg per lane.

Blocking buffer: 3% nonfat dry milk in TBST.

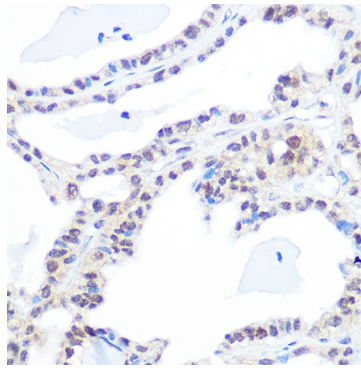
Detection: ECL Basic Kit (RM00020).

Exposure time: 5s.

Validation Data



Confocal imaging of U-2 OS cells using DNA topoisomerase I (TOP1) Rabbit mAb (A12409,dilution 1:100)(Red). The cells were counterstained with α -Tubulin Mouse mAb (AC012,dilution 1:400) (Green). DAPI was used for nuclear staining (blue). Objective: 100x.



Immunohistochemistry analysis of paraffin-embedded Human thyroid cancer using DNA topoisomerase I (DNA topoisomerase I (TOP1)) Rabbit mAb (A12409) at dilution of 1:100 (40x lens). Microwave antigen retrieval performed with 0.01M PBS Buffer (pH 7.2) prior to IHC staining.