

# [KO Validated] CD44 Rabbit pAb

Catalog No.: A12410 **KO Validated** **10 Publications**

## Basic Information

### Observed MW

80kDa

### Calculated MW

82kDa

### Category

Primary antibody

### Applications

ELISA, WB, IHC-P, IF/ICC

### Cross-Reactivity

Human, Mouse

## Background

The protein encoded by this gene is a cell-surface glycoprotein involved in cell-cell interactions, cell adhesion and migration. It is a receptor for hyaluronic acid (HA) and can also interact with other ligands, such as osteopontin, collagens, and matrix metalloproteinases (MMPs). This protein participates in a wide variety of cellular functions including lymphocyte activation, recirculation and homing, hematopoiesis, and tumor metastasis. Transcripts for this gene undergo complex alternative splicing that results in many functionally distinct isoforms, however, the full length nature of some of these variants has not been determined. Alternative splicing is the basis for the structural and functional diversity of this protein, and may be related to tumor metastasis.

## Recommended Dilutions

<b>WB</b>	1:500 - 1:1000
<b>IHC-P</b>	1:50 - 1:200
<b>IF/ICC</b>	1:50 - 1:200

## Immunogen Information

### Gene ID

960

### Swiss Prot

P16070

### Immunogen

Recombinant fusion protein containing a sequence corresponding to amino acids 20-178 of human CD44 (NP\_000601.3).

### Synonyms

IN; LHR; MC56; MDU2; MDU3; MIC4; Pgp1; CDW44; CSPG8; H-CAM; HCELL; ECM-III; HUTCH-1; HUTCH-I; ECMR-III; Hermes-1; 44

## Contact

 | 400-999-6126 | [cn.market@abclonal.com.cn](mailto:cn.market@abclonal.com.cn) | [www.abclonal.com.cn](http://www.abclonal.com.cn)

## Product Information

### Source

Rabbit

### Isotype

IgG

### Purification

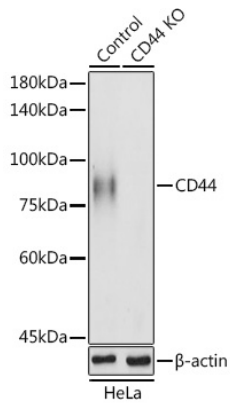
Affinity purification

### Storage

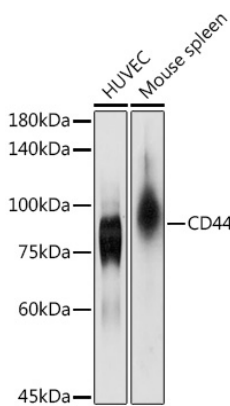
Store at -20°C. Avoid freeze / thaw cycles.

Buffer: PBS with 0.05% proclin300, 50% glycerol, pH7.3.

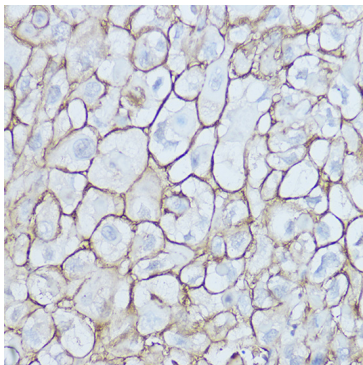
## Validation Data



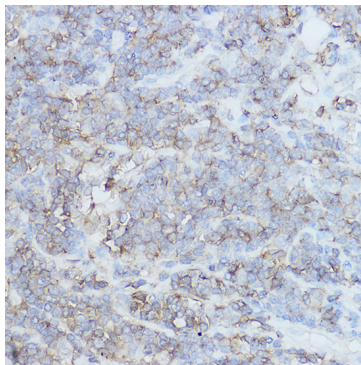
Western blot analysis of lysates from wild type (WT) and CD44 knockout (KO) HeLa cells, using [KO Validated] CD44 Rabbit pAb (A12410) at 1:1000 dilution.  
 Secondary antibody: HRP Goat Anti-Rabbit IgG (H+L) (AS014) at 1:10000 dilution.  
 Lysates/proteins: 25µg per lane.  
 Blocking buffer: 3% nonfat dry milk in TBST.  
 Detection: ECL Basic Kit (RM00020).  
 Exposure time: 10s.



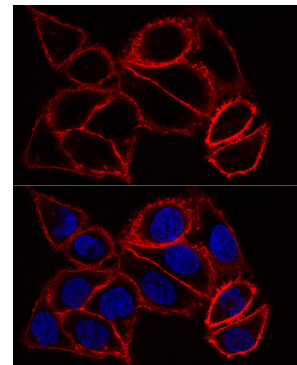
Western blot analysis of various lysates using [KO Validated] CD44 Rabbit pAb (A12410) at 1:1000 dilution.  
 Secondary antibody: HRP Goat Anti-Rabbit IgG (H+L) (AS014) at 1:10000 dilution.  
 Lysates/proteins: 25µg per lane.  
 Blocking buffer: 3% nonfat dry milk in TBST.  
 Detection: ECL Basic Kit (RM00020).  
 Exposure time: 10s.



Immunohistochemistry analysis of paraffin-embedded human esophageal cancer using [KO Validated] CD44 Rabbit pAb (A12410) at dilution of 1:200 (40x lens). Perform high pressure antigen retrieval with 10 mM citrate buffer pH 6.0 before commencing with IHC staining protocol.



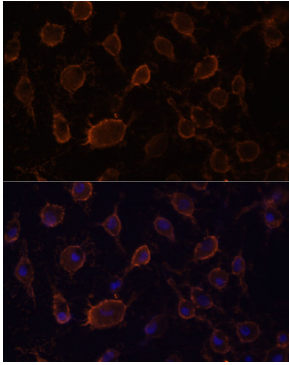
Immunohistochemistry analysis of paraffin-embedded human lung cancer using [KO Validated] CD44 Rabbit pAb (A12410) at dilution of 1:200 (40x lens). Perform high pressure antigen retrieval with 10 mM citrate buffer pH 6.0 before commencing with IHC staining protocol.



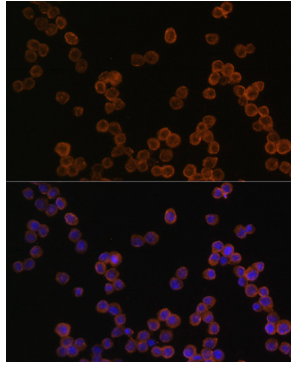
Immunofluorescence analysis of HeLa cells using [KO Validated] CD44 Rabbit pAb (A12410) at dilution of 1:100. Secondary antibody: Cy3 Goat Anti-Rabbit IgG (H+L) (AS007) at 1:500 dilution. Blue: DAPI for nuclear staining.

## Validation Data

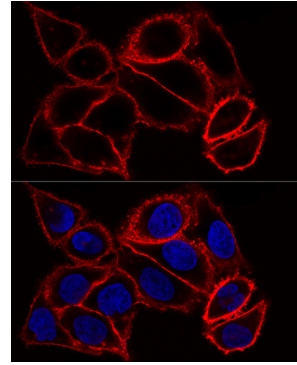
---



Confocal immunofluorescence analysis of A431 cells using [KO Validated] CD44 Rabbit pAb (A12410) at dilution of 1:200. Blue: DAPI for nuclear staining.



Immunofluorescence analysis of RAW264.7 cells using [KO Validated] CD44 Rabbit pAb (A12410) at dilution of 1:100. Blue: DAPI for nuclear staining.



Confocal immunofluorescence analysis of HeLa cells using [KO Validated] CD44 Rabbit pAb (A12410) at dilution of 1:100. Blue: DAPI for nuclear staining.