

HAPLN1 Rabbit pAb

Catalog No.: A12429

Basic Information

Observed MW

48kDa

Calculated MW

40kDa

Category

Primary antibody

Applications

ELISA, WB, IHC-P

Cross-Reactivity

Human, Rat

Background

Predicted to enable hyaluronic acid binding activity. Predicted to be an extracellular matrix structural constituent conferring compression resistance. Predicted to be involved in central nervous system development and skeletal system development. Colocalizes with collagen-containing extracellular matrix.

Recommended Dilutions

WB	1:500 - 1:2000
IHC-P	1:50 - 1:200

Immunogen Information

Gene ID

1404

Swiss Prot

P10915

Immunogen

Recombinant fusion protein containing a sequence corresponding to amino acids 165-354 of human HAPLN1 (NP_001875.1).

Synonyms

CRT1; CRTL1; HAPLN1

Contact

 | 400-999-6126

 | cn.market@abclonal.com.cn

 | www.abclonal.com.cn

Product Information

Source

Rabbit

Isotype

IgG

Purification

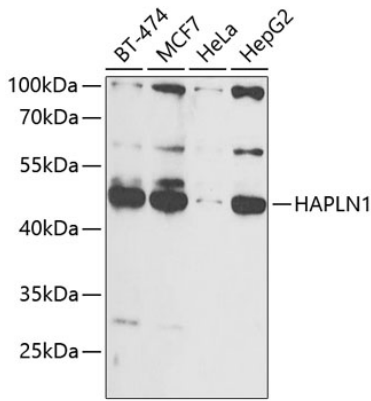
Affinity purification

Storage

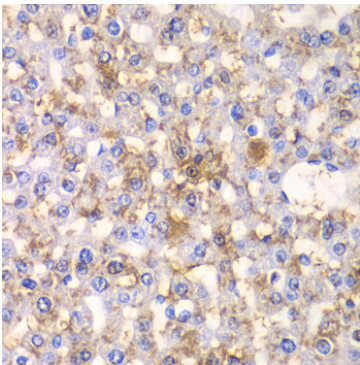
Store at -20°C. Avoid freeze / thaw cycles.

Buffer: PBS with 0.02% sodium azide, 50% glycerol, pH 7.3.

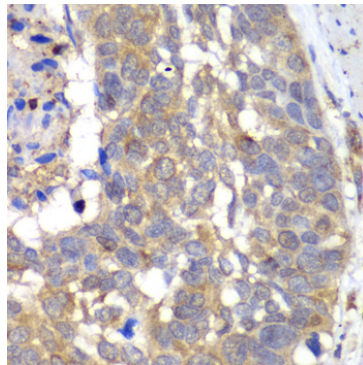
Validation Data



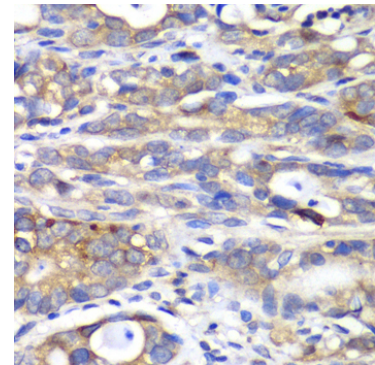
Western blot analysis of various lysates using HAPLN1 Rabbit pAb (A12429) at 1:1000 dilution. Secondary antibody: HRP Goat Anti-Rabbit IgG (H+L) (AS014) at 1:10000 dilution. Lysates/proteins: 25µg per lane. Blocking buffer: 3% nonfat dry milk in TBST. Detection: ECL Basic Kit (RM00020). Exposure time: 90s.



Immunohistochemistry analysis of paraffin-embedded rat liver using HAPLN1 Rabbit pAb (A12429) at dilution of 1:100 (40x lens). Perform microwave antigen retrieval with 10 mM PBS buffer pH 7.2 before commencing with IHC staining protocol.



Immunohistochemistry analysis of paraffin-embedded human esophageal cancer using HAPLN1 Rabbit pAb (A12429) at dilution of 1:100 (40x lens). Perform microwave antigen retrieval with 10 mM PBS buffer pH 7.2 before commencing with IHC staining protocol.



Immunohistochemistry analysis of paraffin-embedded human gastric cancer using HAPLN1 Rabbit pAb (A12429) at dilution of 1:100 (40x lens). Perform microwave antigen retrieval with 10 mM PBS buffer pH 7.2 before commencing with IHC staining protocol.