

ELN Rabbit pAb

Catalog No.: A12433 **1 Publications**

Basic Information

Observed MW

Calculated MW

68kDa

Category

Primary antibody

Applications

ELISA, IHC-P

Cross-Reactivity

Human

Background

This gene encodes a protein that is one of the two components of elastic fibers. Elastic fibers comprise part of the extracellular matrix and confer elasticity to organs and tissues including the heart, skin, lungs, ligaments, and blood vessels. The encoded protein is rich in hydrophobic amino acids such as glycine and proline, which form mobile hydrophobic regions bounded by crosslinks between lysine residues. Degradation products of the encoded protein, known as elastin-derived peptides or elastokines, bind the elastin receptor complex and other receptors and stimulate migration and proliferation of monocytes and skin fibroblasts. Elastokines can also contribute to cancer progression. Deletions and mutations in this gene are associated with supravalvular aortic stenosis (SVAS) and autosomal dominant cutis laxa.

Recommended Dilutions

IHC-P 1:50 - 1:200

Immunogen Information

Gene ID

2006

Swiss Prot

P15502

Immunogen

Recombinant fusion protein containing a sequence corresponding to amino acids 1-97 of human ELN (P15502).

Synonyms

WS; WBS; SVAS; ADCL1; ELN

Contact

☎ | 400-999-6126

✉ | cn.market@abclonal.com.cn

🌐 | www.abclonal.com.cn

Product Information

Source

Rabbit

Isotype

IgG

Purification

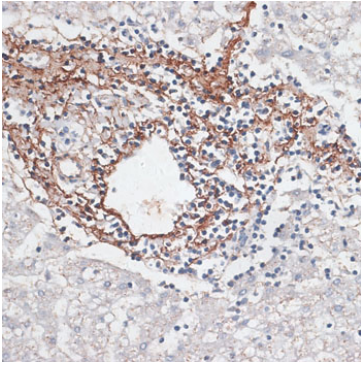
Affinity purification

Storage

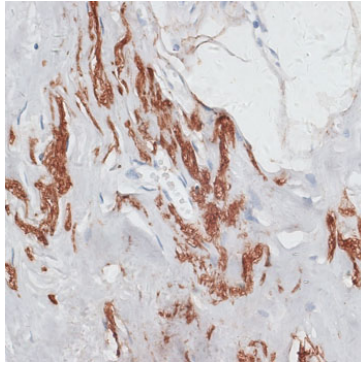
Store at -20°C. Avoid freeze / thaw cycles.

Buffer: PBS with 0.02% sodium azide, 50% glycerol, pH7.3.

Validation Data



Immunohistochemistry analysis of paraffin-embedded human liver cancer using ELN Rabbit pAb (A12433) at dilution of 1:100 (40x lens). Perform microwave antigen retrieval with 10 mM PBS buffer pH 7.2 before commencing with IHC staining protocol.



Immunohistochemistry analysis of paraffin-embedded human breast using ELN Rabbit pAb (A12433) at dilution of 1:100 (40x lens). Perform microwave antigen retrieval with 10 mM PBS buffer pH 7.2 before commencing with IHC staining protocol.