

# IGSF3 Rabbit pAb

Catalog No.: A12449

## Basic Information

### Observed MW

135kDa

### Calculated MW

135kDa

### Category

Primary antibody

### Applications

ELISA, WB

### Cross-Reactivity

Human

## Background

The protein encoded by this gene is an immunoglobulin-like membrane protein containing several V-type Ig-like domains. A mutation in this gene has been associated with bilateral nasolacrimal duct obstruction (LCDD).

## Recommended Dilutions

WB 1:500 - 1:2000

## Immunogen Information

### Gene ID

3321

### Swiss Prot

O75054

### Immunogen

Recombinant fusion protein containing a sequence corresponding to amino acids 350-562 of human IGSF3 (NP\_001007238.1).

### Synonyms

V8; LCDD; EWI-3; IGSF3

## Contact

 | 400-999-6126

 | [cn.market@abclonal.com.cn](mailto:cn.market@abclonal.com.cn)

 | [www.abclonal.com.cn](http://www.abclonal.com.cn)

## Product Information

### Source

Rabbit

### Isotype

IgG

### Purification

Affinity purification

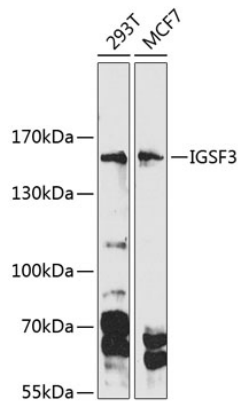
### Storage

Store at -20°C. Avoid freeze / thaw cycles.

Buffer: PBS with 0.02% sodium azide, 50% glycerol, pH7.3.

## Validation Data

---



Western blot analysis of extracts of various cell lines, using IGSF3 Antibody (A12449) at 1:1000 dilution.  
Secondary antibody: HRP Goat Anti-Rabbit IgG (H+L) (AS014) at 1:10000 dilution.  
Lysates/proteins: 25µg per lane.  
Blocking buffer: 3% nonfat dry milk in TBST.  
Detection: ECL Basic Kit (RM00020).  
Exposure time: 90s.