

# MT-ND5 Rabbit pAb

Catalog No.: A12465 **1 Publications**

## Basic Information

### Observed MW

67kDa

### Calculated MW

67kDa

### Category

Primary antibody

### Applications

ELISA, WB

### Cross-Reactivity

Human, Mouse, Rat

## Background

Contributes to NADH dehydrogenase (ubiquinone) activity. Predicted to be involved in electron transport coupled proton transport; mitochondrial electron transport, NADH to ubiquinone; and mitochondrial respiratory chain complex I assembly. Located in mitochondrion. Is expressed in central nervous system; heart; liver; metanephros; and retina. Human ortholog(s) of this gene implicated in Leber hereditary optic neuropathy; Leigh disease; and MELAS syndrome. Orthologous to human MT-ND5 (mitochondrially encoded NADH:ubiquinone oxidoreductase core subunit 5).

## Recommended Dilutions

WB 1:500 - 1:2000

## Immunogen Information

### Gene ID

17721

### Swiss Prot

P03915

### Immunogen

A synthetic peptide corresponding to a sequence within amino acids 300-400 of mouse MT-ND5 (NP\_904338.1).

### Synonyms

ND5; MT-ND5

## Contact

 | 400-999-6126

 | [cn.market@abclonal.com.cn](mailto:cn.market@abclonal.com.cn)

 | [www.abclonal.com.cn](http://www.abclonal.com.cn)

## Product Information

### Source

Rabbit

### Isotype

IgG

### Purification

Affinity purification

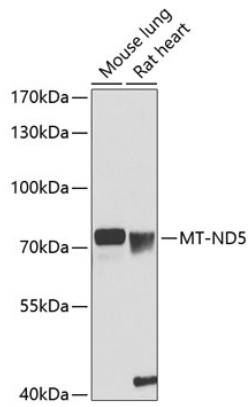
### Storage

Store at -20°C. Avoid freeze / thaw cycles.

Buffer: PBS with 0.02% sodium azide, 50% glycerol, pH 7.3.

## Validation Data

---



Western blot analysis of extracts of various cell lines, using MT-ND5 antibody (A12465) at 1:1000 dilution.  
Secondary antibody: HRP Goat Anti-Rabbit IgG (H+L) (AS014) at 1:10000 dilution.  
Lysates/proteins: 25µg per lane.  
Blocking buffer: 3% nonfat dry milk in TBST.  
Detection: ECL Basic Kit (RM00020).  
Exposure time: 90s.