

# PPP1CA Rabbit pAb

Catalog No.: A12468

8 Publications

## Basic Information

**Observed MW**

38kDa

**Calculated MW**

38kDa

**Category**

Primary antibody

**Applications**

WB, IF/ICC, ELISA

**Cross-Reactivity**

Human, Mouse, Rat

## Background

The protein encoded by this gene is one of the three catalytic subunits of protein phosphatase 1 (PP1). This broadly expressed gene encodes the alpha subunit of the PP1 complex that associates with over 200 regulatory proteins to form holoenzymes which dephosphorylate their biological targets with high specificity. PP1 is a serine/threonine specific protein phosphatase known to be involved in the regulation of a variety of cellular processes, such as cell division, glycogen metabolism, muscle contractility, protein synthesis, and HIV-1 viral transcription. Increased PP1 activity has been observed in the end stage of heart failure. Studies suggest that PP1 is an important regulator of cardiac function and that PP1 deregulation is implicated in diabetes and multiple types of cancer. Three alternatively spliced transcript variants encoding different isoforms have been found for this gene.

## Recommended Dilutions

**WB** 1:500 - 1:1000**IF/ICC** 1:50 - 1:200

**ELISA** Recommended starting concentration is 1 µg/mL. Please optimize the concentration based on your specific assay requirements.

## Immunogen Information

**Gene ID**

5499

**Swiss Prot**

P62136

**Immunogen**

Recombinant protein (or fragment). This information is considered to be commercially sensitive.

**Synonyms**

PP1A; PP-1A; PPP1A; PP1alpha; PPP1CA

## Contact

 | 400-999-6126 | [cn.market@abclonal.com.cn](mailto:cn.market@abclonal.com.cn) | [www.abclonal.com.cn](http://www.abclonal.com.cn)

## Product Information

**Source**

Rabbit

**Isotype**

IgG

**Purification**

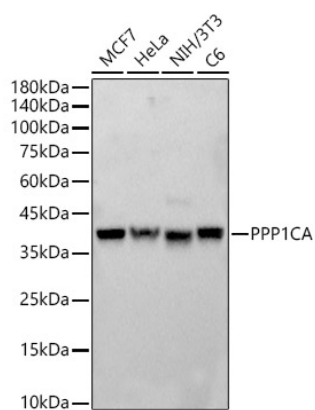
Affinity purification

**Storage**

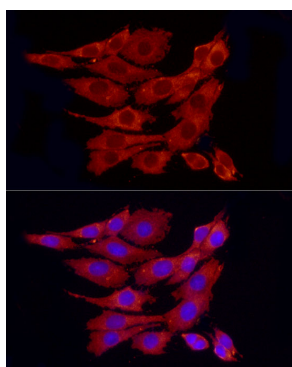
Store at -20°C. Avoid freeze / thaw cycles.

Buffer: PBS containing 50% glycerol, preserved with proclin300 or sodium azide (as specified on the Certificate of Analysis), pH 7.3.

## Validation Data



Western blot analysis of various lysates, using PPP1CA Rabbit pAb (A12468) at 1:800 dilution. Secondary antibody: HRP-conjugated Goat anti-Rabbit IgG (H+L) (AS014) at 1:10000 dilution. Lysates/proteins: 25µg per lane. Blocking buffer: 3% nonfat dry milk in TBST. Detection: ECL Basic Kit (RM00020). Exposure time: 0.5s.



Immunofluorescence analysis of PC-12 cells using PPP1CA Rabbit pAb (A12468) at dilution of 1:100 (40x lens). Secondary antibody: Cy3-conjugated Goat anti-Rabbit IgG (H+L) (AS007) at 1:500 dilution. Blue: DAPI for nuclear staining.