

[KO Validated] EHMT2 Rabbit pAb

Catalog No.: A1247 **KO Validated** **1 Publications**

Basic Information

Observed MW

150kDa/170kDa

Calculated MW

132kDa

Category

Primary antibody

Applications

WB,IP,ELISA

Cross-Reactivity

Human

Background

This gene encodes a methyltransferase that methylates lysine residues of histone H3. Methylation of H3 at lysine 9 by this protein results in recruitment of additional epigenetic regulators and repression of transcription. This gene was initially thought to be two different genes, NG36 and G9a, adjacent to each other in the HLA locus. Alternative splicing results in multiple transcript variants.

Recommended Dilutions

WB 1:500 - 1:1000

IP 0.5µg-4µg antibody for
200µg-400µg extracts of
whole cells

ELISA Recommended starting
concentration is 1 µg/mL.
Please optimize the
concentration based on
your specific assay
requirements.

Immunogen Information

Gene ID

10919

Swiss Prot

Q96KQ7

Immunogen

Recombinant protein (or fragment). This information is considered to be commercially sensitive.

Synonyms

G9A; BAT8; GAT8; NG36; KMT1C; C6orf30; T2

Contact

 | 400-999-6126

 | cn.market@abclonal.com.cn

 | www.abclonal.com.cn

Product Information

Source

Rabbit

Isotype

IgG

Purification

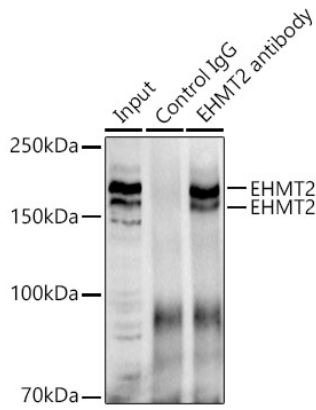
Affinity purification

Storage

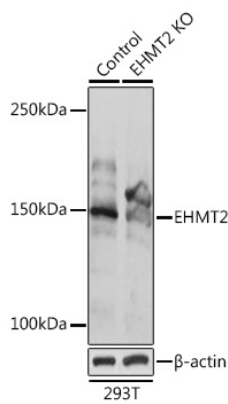
Store at -20°C. Avoid freeze / thaw cycles.

Buffer: PBS containing 50% glycerol, preserved with proclin300 or sodium azide (as specified on the Certificate of Analysis), pH 7.3.

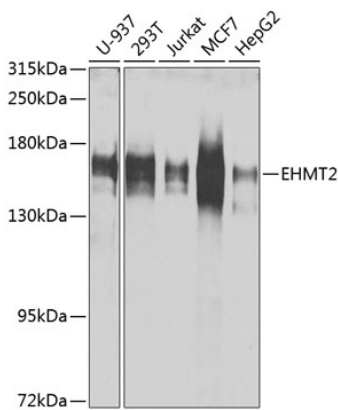
Validation Data



Immunoprecipitation analysis of 300 µg extracts of 293T cells using 3 µg [KO Validated] EHM2 antibody (A1247). Western blot was performed from the immunoprecipitate using [KO Validated] EHM2 antibody (A1247) at a dilution of 1:1000.



Western blot analysis of lysates from wild type (WT) and EHM2 knockout (KO) 293T cells, using [KO Validated] EHM2 Rabbit pAb (A1247) at 1:1000 dilution. Secondary antibody: HRP-conjugated Goat anti-Rabbit IgG (H+L) (AS014) at 1:10000 dilution. Lysates/proteins: 25µg per lane. Blocking buffer: 3% nonfat dry milk in TBST. Detection: ECL Basic Kit (RM00020). Exposure time: 1s.



Western blot analysis of various lysates using [KO Validated] EHM2 Rabbit pAb (A1247) at 1:1000 dilution. Secondary antibody: HRP-conjugated Goat anti-Rabbit IgG (H+L) (AS014) at 1:10000 dilution. Lysates/proteins: 25µg per lane. Blocking buffer: 3% nonfat dry milk in TBST. Detection: ECL Basic Kit (RM00020). Exposure time: 30s.