

MYO10 Rabbit pAb

Catalog No.: A12471 **1 Publications**

Basic Information

Observed MW

270kDa

Calculated MW

237kDa

Category

Primary antibody

Applications

ELISA, WB, IF/ICC

Cross-Reactivity

Human, Mouse

Background

This gene encodes a member of the myosin superfamily. The protein represents an unconventional myosin; it should not be confused with the conventional non-muscle myosin-10 (MYH10). Unconventional myosins contain the basic domains of conventional myosins and are further distinguished from class members by their tail domains. This gene functions as an actin-based molecular motor and plays a role in integration of F-actin and microtubule cytoskeletons during meiosis.

Recommended Dilutions

WB	1:500 - 1:2000
IF/ICC	1:50 - 1:200

Immunogen Information

Gene ID

4651

Swiss Prot

Q9HD67

Immunogen

Recombinant fusion protein containing a sequence corresponding to amino acids 845-944 of human MYO10 (NP_036466.2).

Synonyms

MyoX; MYO10

Contact

 | 400-999-6126

 | cn.market@abclonal.com.cn

 | www.abclonal.com.cn

Product Information

Source

Rabbit

Isotype

IgG

Purification

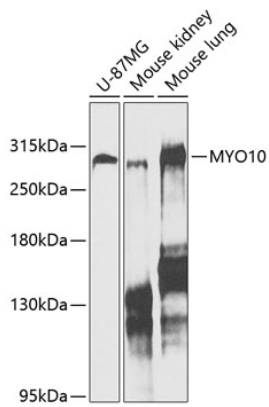
Affinity purification

Storage

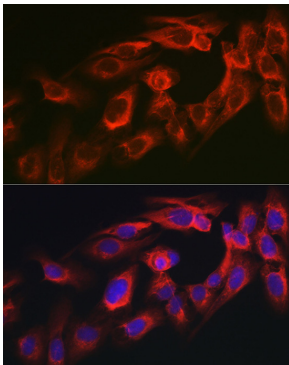
Store at -20°C. Avoid freeze / thaw cycles.

Buffer: PBS with 0.02% sodium azide, 50% glycerol, pH7.3.

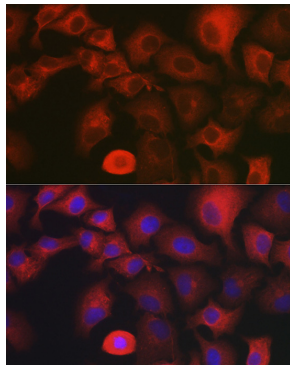
Validation Data



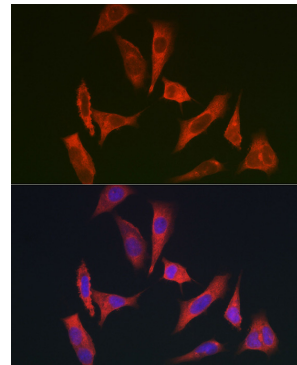
Western blot analysis of extracts of various cell lines, using MYO10 antibody (A12471) at 1:1000 dilution. Secondary antibody: HRP Goat Anti-Rabbit IgG (H+L) (AS014) at 1:10000 dilution. Lysates/proteins: 25µg per lane. Blocking buffer: 3% nonfat dry milk in TBST. Detection: ECL Enhanced Kit (RM00021). Exposure time: 20s.



Immunofluorescence analysis of U2OS cells using MYO10 antibody (A12471) at dilution of 1:350. Blue: DAPI for nuclear staining.



Immunofluorescence analysis of A-549 cells using MYO10 antibody (A12471) at dilution of 1:350. Blue: DAPI for nuclear staining.



Immunofluorescence analysis of HeLa cells using MYO10 antibody (A12471) at dilution of 1:350. Blue: DAPI for nuclear staining.