

# Moesin Rabbit pAb

Catalog No.: A12473

## Basic Information

### Observed MW

80kDa

### Calculated MW

68kDa

### Category

Primary antibody

### Applications

ELISA, WB, IF/ICC

### Cross-Reactivity

Human, Mouse, Rat

## Background

Moesin (for membrane-organizing extension spike protein) is a member of the ERM family which includes ezrin and radixin. ERM proteins appear to function as cross-linkers between plasma membranes and actin-based cytoskeletons. Moesin is localized to filopodia and other membranous protrusions that are important for cell-cell recognition and signaling and for cell movement.

## Recommended Dilutions

|               |                |
|---------------|----------------|
| <b>WB</b>     | 1:500 - 1:2000 |
| <b>IF/ICC</b> | 1:50 - 1:200   |

## Immunogen Information

### Gene ID

4478

### Swiss Prot

P26038

### Immunogen

Recombinant fusion protein containing a sequence corresponding to amino acids 458-557 of human Moesin (NP\_002435.1).

### Synonyms

HEL70; IMD50; Moesin

## Contact

☎ | 400-999-6126

✉ | [cn.market@abclonal.com.cn](mailto:cn.market@abclonal.com.cn)

🌐 | [www.abclonal.com.cn](http://www.abclonal.com.cn)

## Product Information

### Source

Rabbit

### Isotype

IgG

### Purification

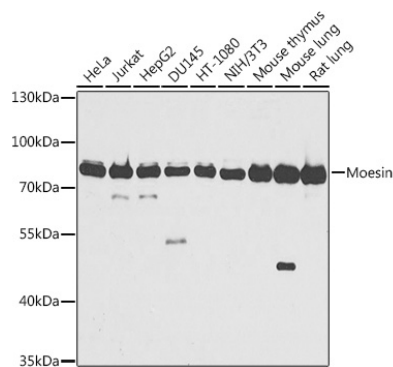
Affinity purification

### Storage

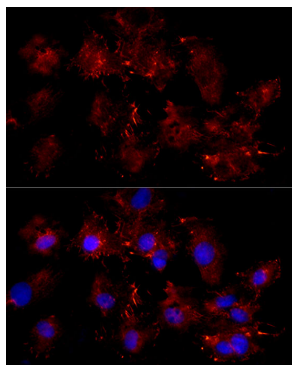
Store at -20°C. Avoid freeze / thaw cycles.

Buffer: PBS with 0.02% sodium azide, 50% glycerol, pH7.3.

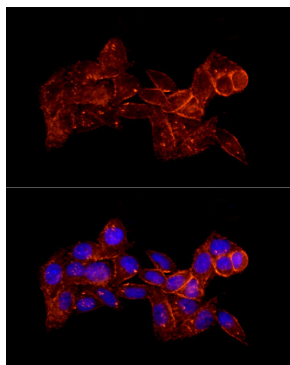
## Validation Data



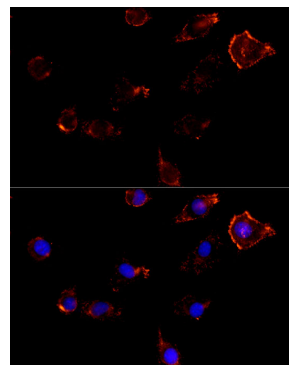
Western blot analysis of extracts of various cell lines, using Moesin antibody (A12473) at 1:1000 dilution. Secondary antibody: HRP Goat Anti-Rabbit IgG (H+L) (AS014) at 1:10000 dilution. Lysates/proteins: 25µg per lane. Blocking buffer: 3% nonfat dry milk in TBST. Detection: ECL Basic Kit (RM00020). Exposure time: 5s.



Immunofluorescence analysis of C6 cells using Moesin Rabbit pAb (A12473) at dilution of 1:100 (40x lens). Blue: DAPI for nuclear staining.



Immunofluorescence analysis of HeLa cells using Moesin Rabbit pAb (A12473) at dilution of 1:100 (40x lens). Blue: DAPI for nuclear staining.



Immunofluorescence analysis of L929 cells using Moesin Rabbit pAb (A12473) at dilution of 1:100 (40x lens). Blue: DAPI for nuclear staining.