

SLC1A4 Rabbit pAb

Catalog No.: A12507 **4 Publications**

Basic Information

Observed MW

56kDa

Calculated MW

56kDa

Category

Primary antibody

Applications

WB, ELISA

Cross-Reactivity

Human, Mouse, Rat

Background

The protein encoded by this gene is a sodium-dependent neutral amino acid transporter for alanine, serine, cysteine, and threonine. Defects in this gene have been associated with developmental delay, microcephaly, and intellectual disability.

Recommended Dilutions

WB 1:500 - 1:2000

ELISA Recommended starting concentration is 1 µg/mL. Please optimize the concentration based on your specific assay requirements.

Immunogen Information

Gene ID

6509

Swiss Prot

P43007

Immunogen

This information is considered to be commercially sensitive.

Synonyms

SATT; ASCT1; SPATCCM; SLC1A4

Contact

☎ | 400-999-6126

✉ | cn.market@abclonal.com.cn

🌐 | www.abclonal.com.cn

Product Information

Source

Rabbit

Isotype

IgG

Purification

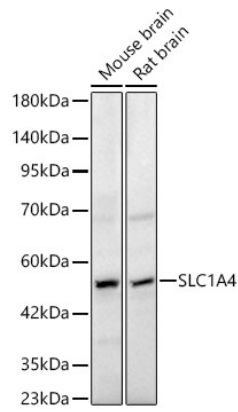
Affinity purification

Storage

Store at -20°C. Avoid freeze / thaw cycles.

Buffer: PBS containing 50% glycerol, preserved with proclin300 or sodium azide (as specified on the Certificate of Analysis), pH 7.3.

Validation Data



Western blot analysis of various lysates, using SLC1A4 Rabbit pAb (A12507) at 1:2000 dilution.
Secondary antibody: HRP-conjugated Goat anti-Rabbit IgG (H+L) (AS014) at 1:10000 dilution.
Lysates/proteins: 25 μ g per lane.
Blocking buffer: 3% nonfat dry milk in TBST.
Detection: ECL Basic Kit (RM00020).
Exposure time: 10s.