

DNA topoisomerase I (TOP1) Rabbit pAb

Catalog No.: A12524

Basic Information

Observed MW

120kDa

Calculated MW

91kDa

Category

Primary antibody

Applications

WB,IHC-P,IP,ELISA

Cross-Reactivity

Human, Mouse

Background

This gene encodes a DNA topoisomerase, an enzyme that controls and alters the topologic states of DNA during transcription. This enzyme catalyzes the transient breaking and rejoining of a single strand of DNA which allows the strands to pass through one another, thus altering the topology of DNA. This gene is localized to chromosome 20 and has pseudogenes which reside on chromosomes 1 and 22.

Recommended Dilutions

WB 1:500 - 1:2000

IHC-P 1:50 - 1:200

IP 0.5µg-4µg antibody for
200µg-400µg extracts of
whole cells

ELISA Recommended starting
concentration is 1 µg/mL.
Please optimize the
concentration based on
your specific assay
requirements.

Immunogen Information

Gene ID

7150

Swiss Prot

P11387

Immunogen

Synthetic peptide. This information is considered to be commercially sensitive.

Synonyms

TOPI; DNA topoisomerase I (TOP1)

Contact

☎ | 400-999-6126

✉ | cn.market@abclonal.com.cn

🌐 | www.abclonal.com.cn

Product Information

Source

Rabbit

Isotype

IgG

Purification

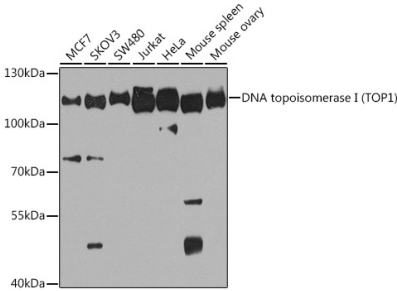
Affinity purification

Storage

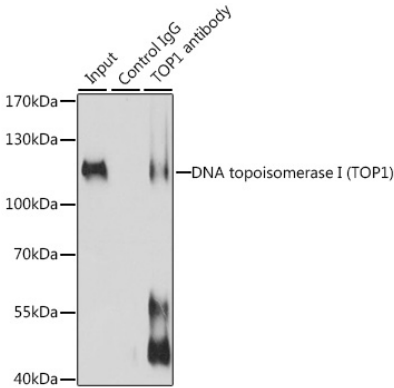
Store at -20°C. Avoid freeze / thaw cycles.

Buffer: PBS with 0.02% sodium azide, 50% glycerol, pH7.3.

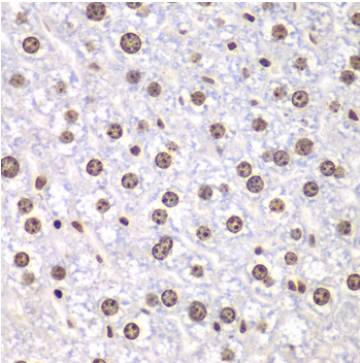
Validation Data



Western blot analysis of various lysates using DNA topoisomerase I (TOP1) Rabbit pAb (A12524) at 1:1000 dilution.
Secondary antibody: HRP-conjugated Goat anti-Rabbit IgG (H+L) (AS014) at 1:10000 dilution.
Lysates/proteins: 25µg per lane.
Blocking buffer: 3% nonfat dry milk in TBST.
Detection: ECL Basic Kit (RM00020).
Exposure time: 90s.



Immunoprecipitation analysis of 200 µg extracts of Jurkat cells, using 3 µg DNA topoisomerase I (DNA topoisomerase I (TOP1)) antibody (A12524). Western blot was performed from the immunoprecipitate using DNA topoisomerase I (DNA topoisomerase I (TOP1)) antibody (A12524) at a dilution of 1:1000.



Immunohistochemistry analysis of paraffin-embedded Mouse liver using DNA topoisomerase I (TOP1) Rabbit pAb (A12524) at dilution of 1:100 (40x lens). Microwave antigen retrieval performed with 0.01M PBS Buffer (pH 7.2) prior to IHC staining.