

MAD2B/MAD2L2 Rabbit pAb

Catalog No.: A12559

Basic Information

Observed MW

24kDa

Calculated MW

24kDa

Category

Primary antibody

Applications

ELISA, WB, IF/ICC

Cross-Reactivity

Human, Mouse, Rat

Background

The protein encoded by this gene is a component of the mitotic spindle assembly checkpoint that prevents the onset of anaphase until all chromosomes are properly aligned at the metaphase plate. The encoded protein, which is similar to MAD2L1, is capable of interacting with ADAM9, ADAM15, REV1, and REV3 proteins.

Recommended Dilutions

WB 1:500 - 1:2000

IF/ICC 1:50 - 1:200

Immunogen Information

Gene ID

10459

Swiss Prot

Q9UI95

Immunogen

Recombinant fusion protein containing a sequence corresponding to amino acids 1-211 of human MAD2B/MAD2B/MAD2L2 (NP_006332.3).

Synonyms

REV7; FANCV; MAD2B; POLZ2; MAD2B/MAD2L2

Contact

☎ | 400-999-6126

✉ | cn.market@abclonal.com.cn

🌐 | www.abclonal.com.cn

Product Information

Source

Rabbit

Isotype

IgG

Purification

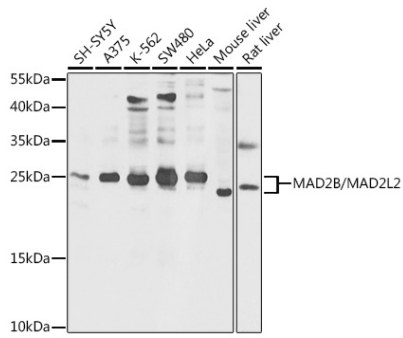
Affinity purification

Storage

Store at -20°C. Avoid freeze / thaw cycles.

Buffer: PBS with 0.02% sodium azide, 50% glycerol, pH7.3.

Validation Data



Western blot analysis of extracts of various cell lines, using MAD2B/MAD2B/MAD2L2 antibody (A12559) at 1:1000 dilution.

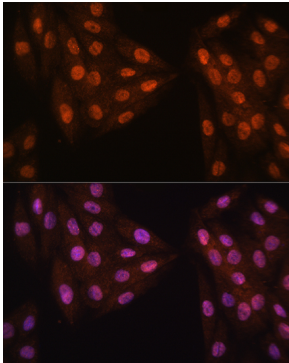
Secondary antibody: HRP Goat Anti-Rabbit IgG (H+L) (AS014) at 1:10000 dilution.

Lysates/proteins: 25µg per lane.

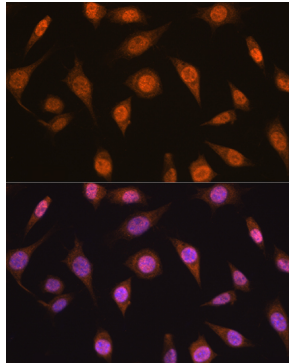
Blocking buffer: 3% nonfat dry milk in TBST.

Detection: ECL Basic Kit (RM00020).

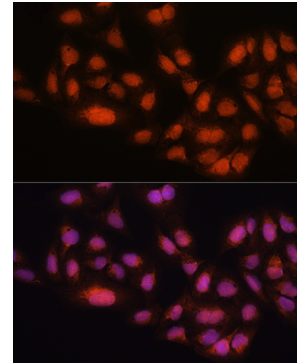
Exposure time: 5s.



Immunofluorescence analysis of H9C2 cells using MAD2B/MAD2B/MAD2L2 antibody (A12559) at dilution of 1:100. Blue: DAPI for nuclear staining.



Immunofluorescence analysis of L929 cells using MAD2B/MAD2B/MAD2L2 antibody (A12559) at dilution of 1:100. Blue: DAPI for nuclear staining.



Immunofluorescence analysis of U2OS cells using MAD2B/MAD2B/MAD2L2 antibody (A12559) at dilution of 1:100. Blue: DAPI for nuclear staining.