

EMR1 Rabbit pAb

Catalog No.: A1256

13 Publications

Basic Information

Observed MW

160kDa

Calculated MW

98kDa

Category

Primary antibody

Applications

ELISA, WB, IF/ICC

Cross-Reactivity

Human, Mouse, Rat

Background

This gene encodes a protein that has a domain resembling seven transmembrane G protein-coupled hormone receptors (7TM receptors) at its C-terminus. The N-terminus of the encoded protein has six EGF-like modules, separated from the transmembrane segments by a serine/threonine-rich domain, a feature reminiscent of mucin-like, single-span, integral membrane glycoproteins with adhesive properties. Multiple alternatively spliced transcript variants encoding different isoforms have been found for this gene.

Recommended Dilutions

WB 1:100 - 1:500

IF/ICC 1:50 - 1:200

Immunogen Information

Gene ID

2015

Swiss Prot

Q14246

Immunogen

Recombinant fusion protein containing a sequence corresponding to amino acids 477-596 of human EMR1 (NP_001965.3).

Synonyms

EMR1; TM7LN3

Contact

☎ | 400-999-6126

✉ | cn.market@abclonal.com.cn

🌐 | www.abclonal.com.cn

Product Information

Source

Rabbit

Isotype

IgG

Purification

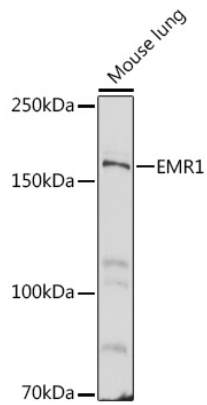
Affinity purification

Storage

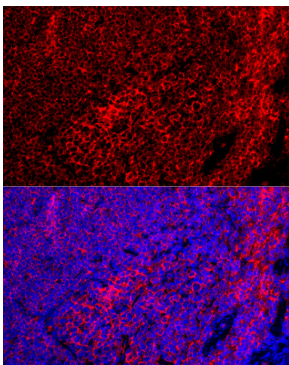
Store at -20°C. Avoid freeze / thaw cycles.

Buffer: PBS with 0.01% thimerosal, 50% glycerol, pH7.3.

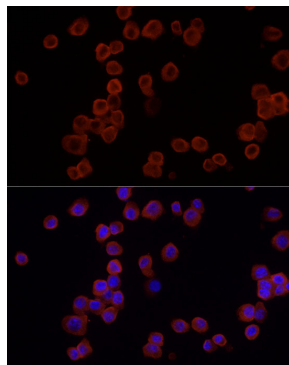
Validation Data



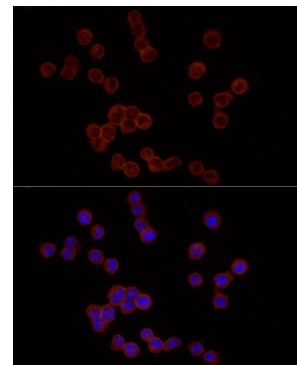
Western blot analysis of extracts of Mouse lung, using EMR1 antibody (A1256) at 1:500 dilution.
Secondary antibody: HRP Goat Anti-Rabbit IgG (H+L) (AS014) at 1:10000 dilution.
Lysates/proteins: 25µg per lane.
Blocking buffer: 3% nonfat dry milk in TBST.
Detection: ECL Basic Kit (RM00020).
Exposure time: 60s.



Immunofluorescence analysis of Mouse spleen using EMR1 antibody (A1256) at dilution of 1:100 (40x lens). Blue: DAPI for nuclear staining.



Immunofluorescence analysis of RAW264.7 cells using EMR1 Rabbit pAb (A1256) at dilution of 1:25 (40x lens). Blue: DAPI for nuclear staining.



Immunofluorescence analysis of THP-1 cells using EMR1 Rabbit pAb (A1256) at dilution of 1:25 (40x lens). Blue: DAPI for nuclear staining.