

# TUSC3 Rabbit pAb

Catalog No.: A12571 **1 Publications**

## Basic Information

### Observed MW

38kDa

### Calculated MW

40kDa

### Category

Primary antibody

### Applications

ELISA, WB

### Cross-Reactivity

Human, Rat

## Background

This gene encodes a protein that has been associated with several biological functions including cellular magnesium uptake, protein glycosylation and embryonic development. This protein localizes to the endoplasmic reticulum and acts as a component of the oligosaccharyl transferase complex which is responsible for N-linked protein glycosylation. This gene is a candidate tumor suppressor gene. Homozygous mutations in this gene are associated with autosomal recessive nonsyndromic mental retardation-7 and in the proliferation and invasiveness of several cancers including metastatic pancreatic cancer, ovarian cancer and glioblastoma multiform.

## Recommended Dilutions

WB 1:500 - 1:2000

## Immunogen Information

### Gene ID

7991

### Swiss Prot

Q13454

### Immunogen

Recombinant fusion protein containing a sequence corresponding to amino acids 42-200 of human TUSC3 (NP\_839952.1).

### Synonyms

M33; N33; MRT7; MRT22; MagT2; OST3A; D8S1992; SLC58A2; TUSC3

## Contact

 | 400-999-6126

 | [cn.market@abclonal.com.cn](mailto:cn.market@abclonal.com.cn)

 | [www.abclonal.com.cn](http://www.abclonal.com.cn)

## Product Information

### Source

Rabbit

### Isotype

IgG

### Purification

Affinity purification

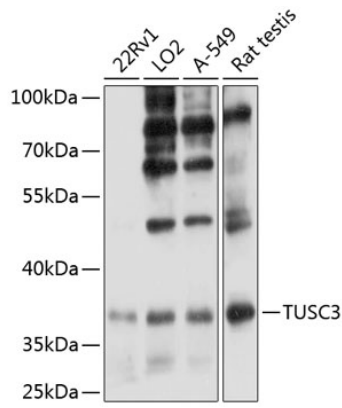
### Storage

Store at -20°C. Avoid freeze / thaw cycles.

Buffer: PBS with 0.01% thimerosal, 50% glycerol, pH7.3.

## Validation Data

---



Western blot analysis of various lysates using TUSC3 Rabbit pAb (A12571) at 1:3000 dilution. Secondary antibody: HRP Goat Anti-Rabbit IgG (H+L) (AS014) at 1:10000 dilution. Lysates/proteins: 25µg per lane. Blocking buffer: 3% nonfat dry milk in TBST. Detection: ECL Enhanced Kit (RM00021). Exposure time: 10s.