

METTL13 Rabbit pAb

Catalog No.: A12582

Basic Information

Observed MW

85kDa

Calculated MW

79kDa

Category

Primary antibody

Applications

ELISA, WB, IF/ICC

Cross-Reactivity

Human

Background

Predicted to enable methyltransferase activity. Involved in negative regulation of cell cycle G1/S phase transition and negative regulation of transcription by RNA polymerase II. Predicted to be located in mitochondrion and nucleus.

Recommended Dilutions

WB 1:500 - 1:2000

IF/ICC 1:50 - 1:100

Immunogen Information

Gene ID

51603

Swiss Prot

Q8N6R0

Immunogen

Recombinant fusion protein containing a sequence corresponding to amino acids 430-699 of human METTL13 (NP_057019.3).

Synonyms

feat; DFNM1; CGI-01; DFNB26; DFNB26M; KIAA0859; EEF1AKNMT; 5630401D24Rik; METTL13

Contact

☎ | 400-999-6126

✉ | cn.market@abclonal.com.cn

🌐 | www.abclonal.com.cn

Product Information

Source

Rabbit

Isotype

IgG

Purification

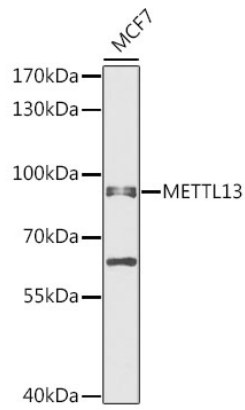
Affinity purification

Storage

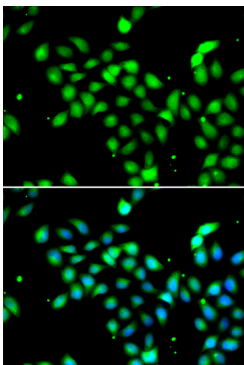
Store at -20°C. Avoid freeze / thaw cycles.

Buffer: PBS with 0.02% sodium azide, 50% glycerol, pH7.3.

Validation Data



Western blot analysis of extracts of MCF7 cells, using METTL13 antibody (A12582) at 1:1000 dilution.
Secondary antibody: HRP Goat Anti-Rabbit IgG (H+L) (AS014) at 1:10000 dilution.
Lysates/proteins: 25µg per lane.
Blocking buffer: 3% nonfat dry milk in TBST.
Detection: ECL Enhanced Kit (RM00021).
Exposure time: 30s.



Immunofluorescence analysis of A549 cells using METTL13 antibody (A12582). Blue: DAPI for nuclear staining.