

Gm13125 Rabbit pAb

Catalog No.: A12619

Basic Information

Observed MW

55kDa

Calculated MW

55kDa

Category

Primary antibody

Applications

ELISA, WB, IHC-P

Cross-Reactivity

Human, Mouse, Rat

Background

Predicted to enable ubiquitin ligase-substrate adaptor activity. Predicted to be part of Cul2-RING ubiquitin ligase complex. Predicted to be active in cytoplasm. Orthologous to several human genes including PRAMEF1 (PRAME family member 1); PRAMEF10 (PRAME family member 10); and PRAMEF11 (PRAME family member 11).

Recommended Dilutions

WB 1:500 - 1:2000

IHC-P 1:50 - 1:200

Immunogen Information

Gene ID

627009

Swiss Prot

Q5VT98

Immunogen

Recombinant fusion protein containing a sequence corresponding to amino acids 1-477 of mouse Gm13125 (NP_001108549.1).

Synonyms

Gm13125; EG627009; Pramef20

Contact

☎ | 400-999-6126

✉ | cn.market@abclonal.com.cn

🌐 | www.abclonal.com.cn

Product Information

Source

Rabbit

Isotype

IgG

Purification

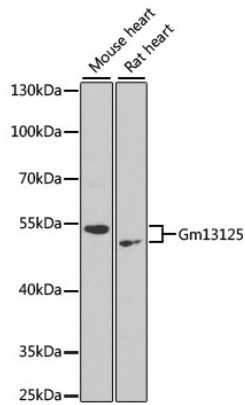
Affinity purification

Storage

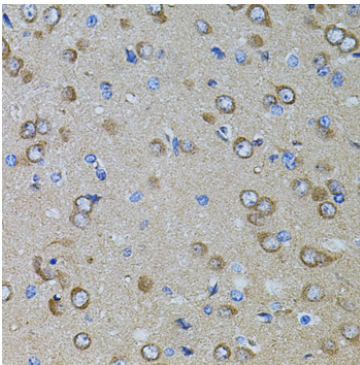
Store at -20°C. Avoid freeze / thaw cycles.

Buffer: PBS with 0.02% sodium azide, 50% glycerol, pH 7.3.

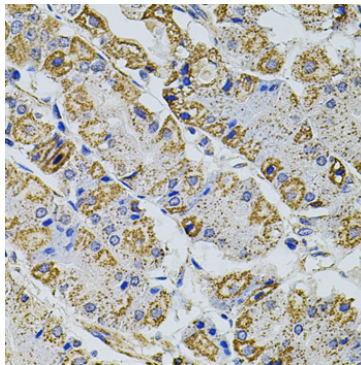
Validation Data



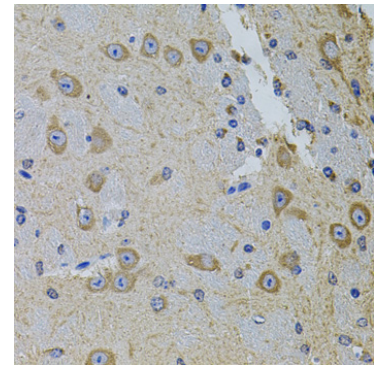
Western blot analysis of various lysates using Gm13125 Rabbit pAb (A12619) at 1:1000 dilution. Secondary antibody: HRP Goat Anti-Rabbit IgG (H+L) (AS014) at 1:10000 dilution. Lysates/proteins: 25µg per lane. Blocking buffer: 3% nonfat dry milk in TBST. Detection: ECL Enhanced Kit (RM00021). Exposure time: 90s.



Immunohistochemistry analysis of paraffin-embedded rat brain using Gm13125 Rabbit pAb (A12619) at dilution of 1:100 (40x lens). Perform microwave antigen retrieval with 10 mM PBS buffer pH 7.2 before commencing with IHC staining protocol.



Immunohistochemistry analysis of paraffin-embedded human stomach using Gm13125 Rabbit pAb (A12619) at dilution of 1:100 (40x lens). Perform microwave antigen retrieval with 10 mM PBS buffer pH 7.2 before commencing with IHC staining protocol.



Immunohistochemistry analysis of paraffin-embedded mouse brain using Gm13125 Rabbit pAb (A12619) at dilution of 1:100 (40x lens). Perform microwave antigen retrieval with 10 mM PBS buffer pH 7.2 before commencing with IHC staining protocol.